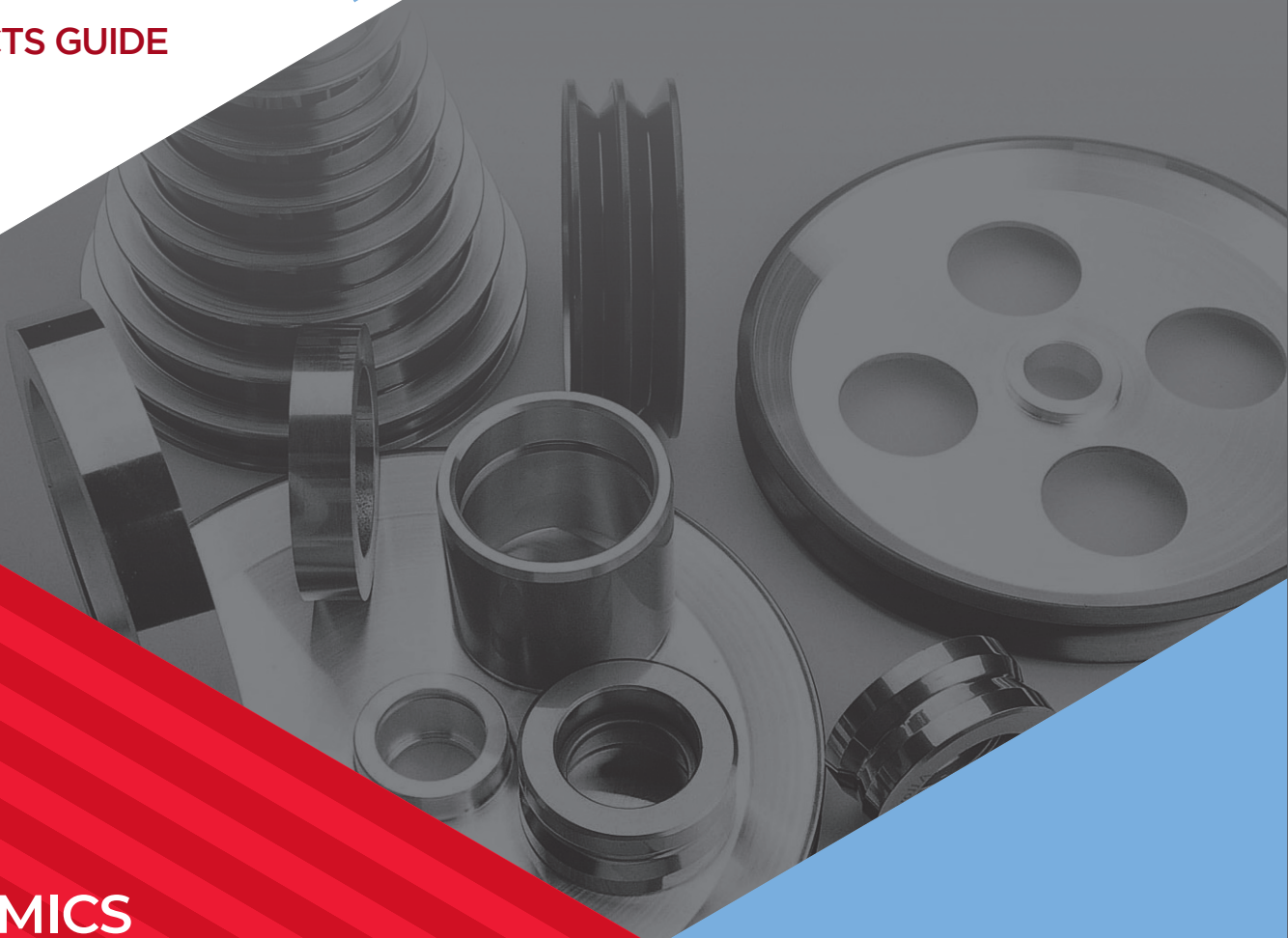


# NCT

PRODUCTS GUIDE



## CERAMICS

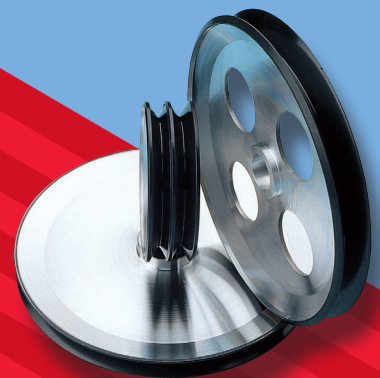
For Yarn & Wire Guides  
Structural Ceramics

## SPRAY COATING

## SUPER HARD

## COATING

Diamond Polishing



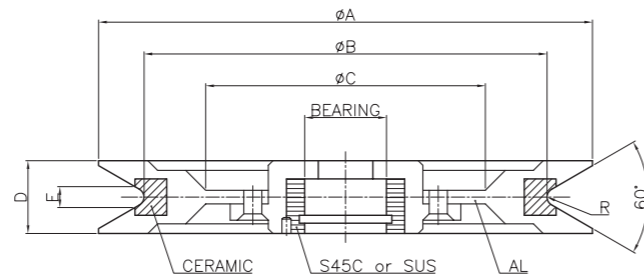
日本セラテック株式会社  
NIPPON CERATECH Co.,LTD.

# CONTENTS



弊社では電線業界(巻線)・繊維業界を中心に、高耐久性及び高品質な各種セラミックガイドをグローバル展開しております。  
又、ユーザー様のご要望によるオーダー製作や、生産現場での課題解決に向けてのご提案を含めた総合マネジメントをさせていただきます。

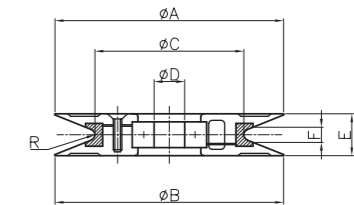
ROLLER	04
TORQUELESS ROLLER	08
DOG TAIL GUIDE	08
EYELET GUIDE	09
DIAGONAL GUIDE	11
SLIT GUIDE	12
HOOK GUIDE	15
SNAIL GUIDE	18
BOW PLATE PARTS	20
BOW GUIDE	21
BAR GUIDE	23
TUBE GUIDE	24
GROOVE RING GUIDE	24
OTHERS GUIDE	25
WINDING NOZZLE PARTS	26
DATA	27
SPRAY COATING	28
CERAMIC CAPSTANS	31



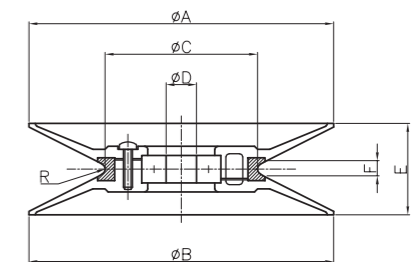
COVER	AL
MATERIAL	Al <sub>2</sub> O <sub>3</sub> 96%

MODEL NO	A	B	C	BEARING	D	E	R
OS-80	100	80	55	OPTION	16	5	0.5, 2.0
OS-100	120	100	79		16	5	0.5, 2.0
OS-120	140	120	90		16	5	0.5, 2.0
OS-140	160	140	109		16	5	2.0
OS-160	185	160	124		20	5	2.0
OS-180	205	180	142		20	5	2.0
OS-200	225	200	160		20	5	2.0
OS-220	245	220	170		20	5	2.0

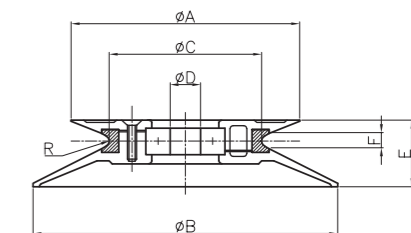
※ DIAMOND POLISHING FINISHED



MODEL NO	A	B	C	D	E	F	R	WEIGHT
152020	20	20	15	Ø3	5	2	1	2.2g
203030	30	30	20	Ø4	8	2.5	1	6.4g
304545	45	45	30	Ø4, Ø5, Ø6, Ø8	10	4	0.3, 1.5, SA 3	23.7g
406060	60	60	40	Ø6, Ø7, Ø8	11	4	0.3, 1.5, 3.25	37.5g
507070	70	70	50	Ø10	8	3.5	0.5	32.0g
508080	80	80	50	Ø10, Ø12	15	7	1.5, 2.5, 10	97.9g

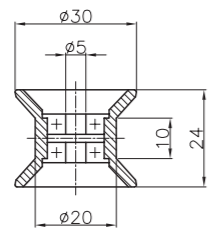
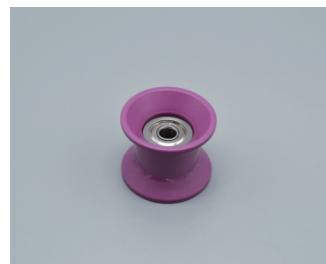


MODEL NO	A	B	C	D	E	F	R	WEIGHT
153030	30	30	15	Ø3	10	2	1	4.8g
204040	40	40	20	Ø4	15	2.5	1	10.9g
306060	60	60	30	Ø4, Ø5, Ø6, Ø8	20	4	0.3, 1.5, SA 3	31.1g
408080	80	80	40	Ø6, Ø7, Ø8	24	4	0.3, 1.5, 3.25	51.4g
501001	100	100	50	Ø10, Ø12	30	7	1.5, 2.5, 10	126.8g

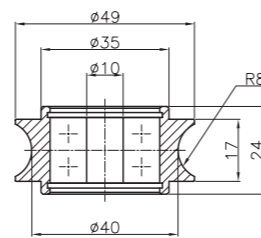
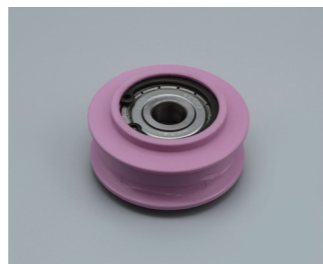


MODEL NO	A	B	C	D	E	F	R	WEIGHT
152030	20	30	15	Ø3	7.5	2	1	3.5g
203040	30	40	20	Ø4	11	2.5	1	8.6g
304560	45	60	30	Ø4, Ø5, Ø6, Ø8	15	4	0.3, 1.5, SA 3	27.4g
406080	60	80	40	Ø6, Ø7, Ø8	17	4	0.3, 1.5, 3.25	41.7g
508010	80	100	50	Ø10, Ø12	23	7	1.5, 2.5, 10	112.4g

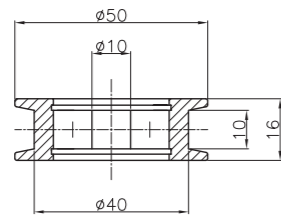
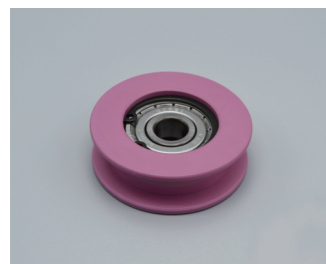
※ DIAMOND POLISHING FINISHED



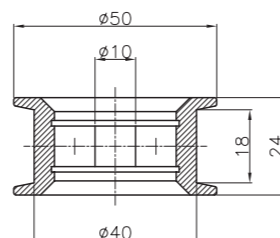
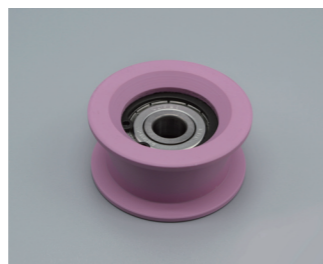
NAME	Ceramic Bearing Roller
NO	<b>302420</b>
MAT'L	Al <sub>2</sub> O <sub>3</sub> 92%
WEIGHT	23.7g



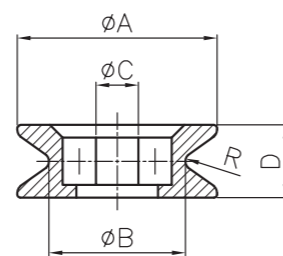
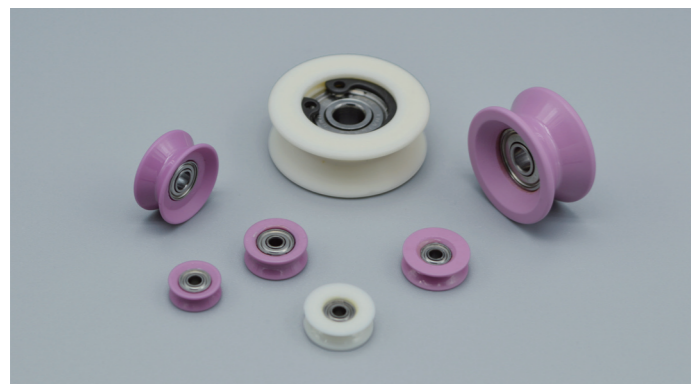
NAME	Ceramic Bearing Roller
NO	<b>492440</b>
MAT'L	Al <sub>2</sub> O <sub>3</sub> 96%
WEIGHT	119.4g



NAME	Ceramic Bearing Roller
NO	<b>501640</b>
MAT'L	Al <sub>2</sub> O <sub>3</sub> 96%
WEIGHT	82.7g

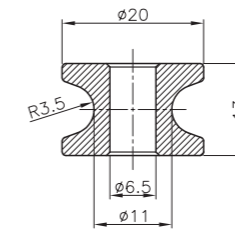


NAME	Ceramic Bearing Roller
NO	<b>502440</b>
MAT'L	Al <sub>2</sub> O <sub>3</sub> 96%
WEIGHT	88.7g

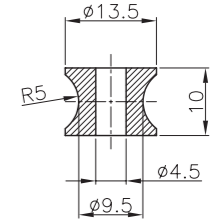


MODEL NO	A	B	C	D	R	MAT'L	WEIGHT
S60830	8	6	2	3	0.5	Al <sub>2</sub> O <sub>3</sub> 96%	0.4g
S71035	10.5	7	2	3.5	0.5	Al <sub>2</sub> O <sub>3</sub> 96%/ 99%	0.8g
801010	10	8	2	4	0.5	Al <sub>2</sub> O <sub>3</sub> 96%	0.8g
R137040	12.5	9.5	4	4	1.5	Al <sub>2</sub> O <sub>3</sub> 96%	1.1g
101414	14	10	3	6	0.5	Al <sub>2</sub> O <sub>3</sub> 96%	1.7g
142010	20	14	4	10	1	Al <sub>2</sub> O <sub>3</sub> 96%	6.6g
R271020	27	20	5	10	0.5	Al <sub>2</sub> O <sub>3</sub> 99%	15.1g

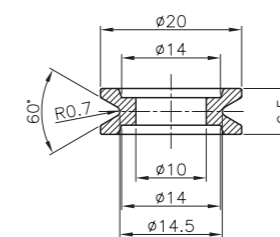
※ DIAMOND POLISHING FINISHED



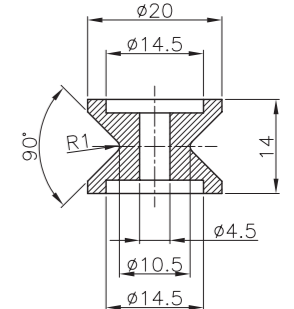
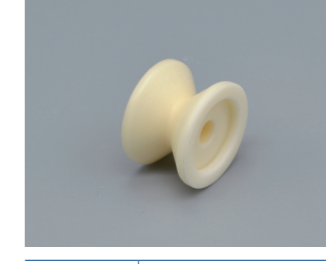
NAME	Roller Guide
NO	<b>Ø6.5 U</b>
MAT'L	Al <sub>2</sub> O <sub>3</sub> 99%
WEIGHT	8.8g



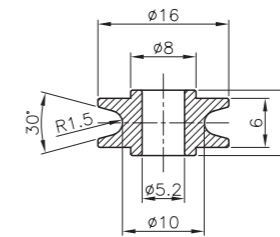
NAME	Roller Guide
NO	<b>149943</b>
MAT'L	Al <sub>2</sub> O <sub>3</sub> 99%
WEIGHT	3.2g



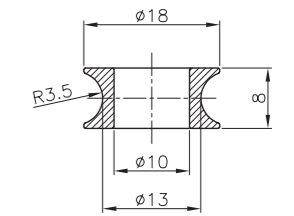
NAME	Roller Guide
NO	<b>201465</b>
MAT'L	Al <sub>2</sub> O <sub>3</sub> 99%
WEIGHT	3.5g



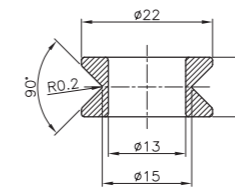
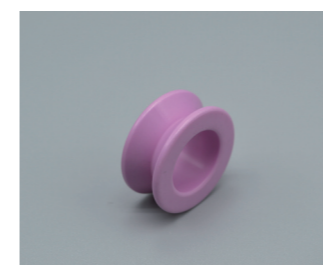
NAME	Roller Guide
NO	<b>191414</b>
MAT'L	Al <sub>2</sub> O <sub>3</sub> 99%
WEIGHT	8.5g



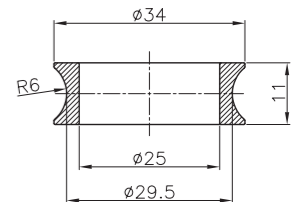
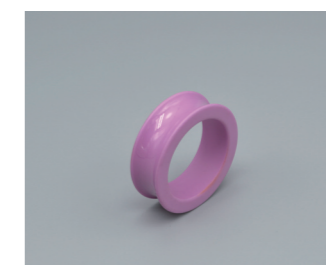
NAME	Roller Guide
NO	<b>R168052</b>
MAT'L	Al <sub>2</sub> O <sub>3</sub> 92%
WEIGHT	2.7g



NAME	Roller Guide
NO	<b>R188010</b>
MAT'L	Al <sub>2</sub> O <sub>3</sub> 96%
WEIGHT	2.8g

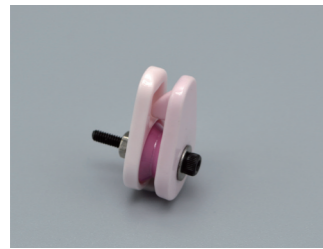


NAME	Roller Guide
NO	<b>R221013</b>
MAT'L	Al <sub>2</sub> O <sub>3</sub> 96%
WEIGHT	6.0g

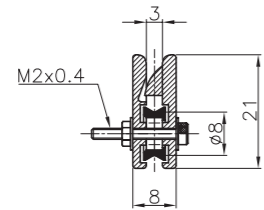


NAME	Roller Guide
NO	<b>R341125</b>
MAT'L	Al <sub>2</sub> O <sub>3</sub> 96%
WEIGHT	11.6g

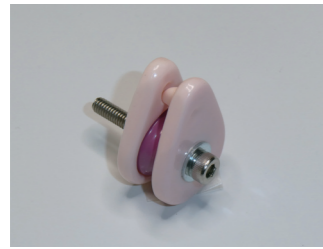
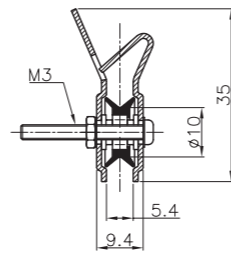
# TORQUELESS ROLLER



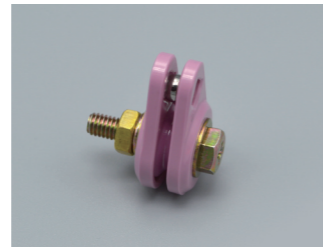
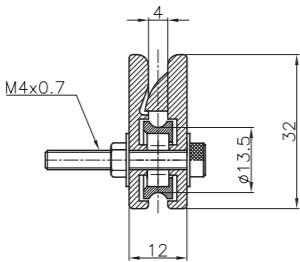
NAME	Torqueless Roller
NO	<b>N71020</b>
MAT'L	Al <sub>2</sub> O <sub>3</sub> 96%
WEIGHT	4.5g



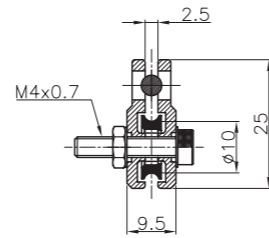
NAME	Torqueless Roller
NO	<b>103530</b>
MAT'L	Al <sub>2</sub> O <sub>3</sub> 96%
WEIGHT	13.2g



NAME	Torqueless Roller
NO	<b>N81020</b>
MAT'L	Al <sub>2</sub> O <sub>3</sub> 99%
WEIGHT	24.6g



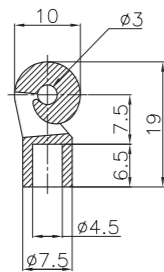
NAME	Torqueless Roller
NO	<b>N71025</b>
MAT'L	Al <sub>2</sub> O <sub>3</sub> 96%
WEIGHT	9.5g



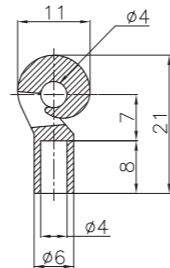
# DOG TAIL GUIDE



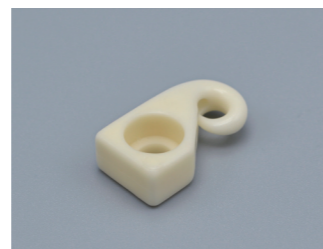
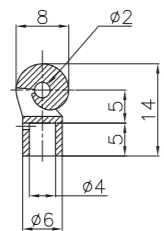
NAME	Dog Tail Guides
NO	<b>103019</b>
MAT'L	Al <sub>2</sub> O <sub>3</sub> 99%
WEIGHT	1.8g



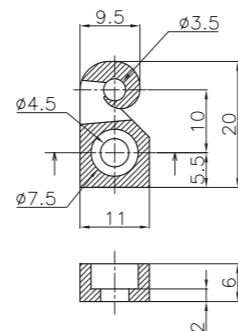
NAME	Dog Tail Guides
NO	<b>D114021</b>
MAT'L	Al <sub>2</sub> O <sub>3</sub> 99%
WEIGHT	1.4g



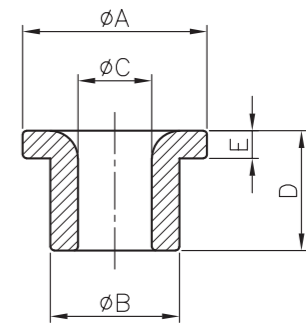
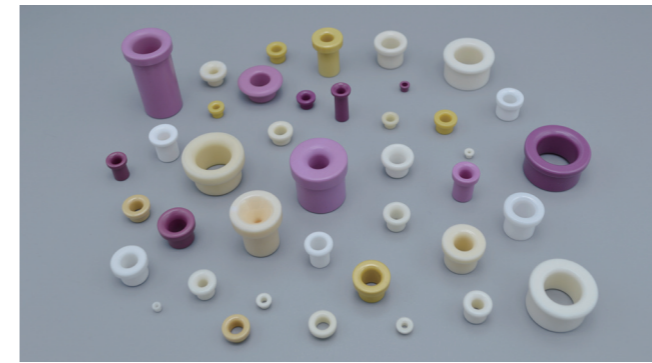
NAME	Dog Tail Guides
NO	<b>D802014</b>
MAT'L	Al <sub>2</sub> O <sub>3</sub> 99%
WEIGHT	0.8g



NAME	Dog Tail Guides
NO	<b>D953520</b>
MAT'L	Al <sub>2</sub> O <sub>3</sub> 99%
WEIGHT	2.5g

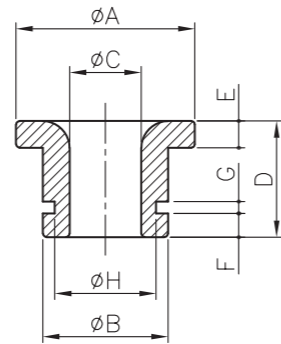


# EYELET GUIDE



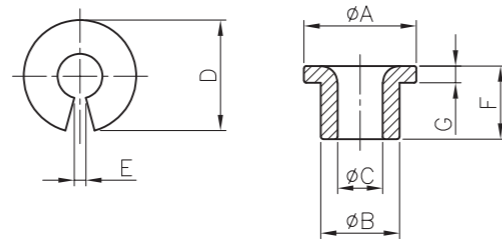
MODEL NO	A	B	C	D	E	MAT'L	WEIGHT	MODEL NO	A	B	C	D	E	MAT'L	WEIGHT
K241230	2.9	2.4	1.2	3.0	1.0	Al <sub>2</sub> O <sub>3</sub> 99%	0.04g	E117090	15.3	11.9	7.0	9.0	2.5	Al <sub>2</sub> O <sub>3</sub> 99%	3.00g
K271133	4.0	2.7	1.1	3.3	1.3	Al <sub>2</sub> O <sub>3</sub> 99%	0.10g	E117086	15.4	11.9	7.0	8.6	1.9	Al <sub>2</sub> O <sub>3</sub> 96%	2.50g
E292314	3.5	2.9	2.3	1.4	0.5	Al <sub>2</sub> O <sub>3</sub> 92%	0.01g	E126318	16.0	12.5	6.3	18.6	3.6	Al <sub>2</sub> O <sub>3</sub> 96%	7.12g
K352535	4.5	3.5	2.5	3.5	1.0	Al <sub>2</sub> O <sub>3</sub> 92%	0.10g	E126214	15.9	12.5	6.2	14.9	3.2	Al <sub>2</sub> O <sub>3</sub> 96%	5.72g
K382135	5.3	3.8	2.1	3.5	1.0	Al <sub>2</sub> O <sub>3</sub> 99%	0.15g	E126515	19.2	12.8	6.5	15.5	4.7	Al <sub>2</sub> O <sub>3</sub> 96%	7.71g
E413011	4.9	4.1	3.0	1.1	0.7	Al <sub>2</sub> O <sub>3</sub> 92%	0.04g	E161016	20.9	16.1	10.9	16.0	3.1	Al <sub>2</sub> O <sub>3</sub> 96%	7.32g
E461996	5.8	4.6	1.9	9.6	1.5	Al <sub>2</sub> O <sub>3</sub> 96%	0.52g	T181314	24.0	18.7	13.4	14.5	4.8	Al <sub>2</sub> O <sub>3</sub> 99%	10.37g
K473040	6.6	4.7	3.0	4.0	1.0	Al <sub>2</sub> O <sub>3</sub> 92%	0.22g	T191515	25.0	19.5	15.0	15.0	5.0	Al <sub>2</sub> O <sub>3</sub> 99%	10.62g
K483025	6.5	4.8	3.0	2.5	1.0	Al <sub>2</sub> O <sub>3</sub> 92%	0.15g	T221513	25.0	22.5	15.0	13.0	3.0	Al <sub>2</sub> O <sub>3</sub> 92%	10.90g
K483630	6.6	4.8	3.6	3.0	1.5	Al <sub>2</sub> O <sub>3</sub> 92%	0.12g	E103611	12.1	10.0	3.6	11.0	6.5	Al <sub>2</sub> O <sub>3</sub> 99%	3.60g
E563538	8.1	5.6	3.5	3.8	1.5	Al <sub>2</sub> O <sub>3</sub> 92%	0.32g	E105219	12.2	10.0	5.2	19.1	2.0	Al <sub>2</sub> O <sub>3</sub> 96%	4.17g
K573597	7.2	5.7	3.5	9.7	1.9	Al <sub>2</sub> O <sub>3</sub> 99%	0.70g	T106510	13.5	10.0	6.5	10.1	3.0	Al <sub>2</sub> O <sub>3</sub> 92%	2.22g
K583060	8.0	5.8	3.0	6.0	2.0	Al <sub>2</sub> O <sub>3</sub> 92%	0.50g	E126112	15.1	12.0	6.1	12.0	3.0	Al <sub>2</sub> O <sub>3</sub> 99%	4.50g
E592451	7.0	5.9	2.4	5.1	1.9	Al <sub>2</sub> O <sub>3</sub> 92%	0.47g	T127510	15.0	12.0	7.5	10.0	2.5	Al <sub>2</sub> O <sub>3</sub> 92%/99%	3.13g
E593359	10.3	5.9	3.3	5.9	2.7	Al <sub>2</sub> O <sub>3</sub> 96%	0.92g	T128012	15.0	12.0	8.0	12.0	3.0	Al <sub>2</sub> O <sub>3</sub> 99%	3.30g
K593456	8.5	5.9	3.4	5.6	1.8	Al <sub>2</sub> O <sub>3</sub> 92%	0.48g	T138590	20.0	13.0	8.5	9.0	3.0	Al <sub>2</sub> O <sub>3</sub> 96%/99%	4.47g
E612685	8.2	6.1	2.6	8.5	1.8	Al <sub>2</sub> O <sub>3</sub> 92%	0.82g	E159412	19.9	15.9	9.4	12.8	3.0	Al <sub>2</sub> O <sub>3</sub> 96%	6.15g
K633910	8.0	6.3	3.9	10.0	2.0	Al <sub>2</sub> O <sub>3</sub> 92%	0.80g	E181417	20.2	18.0	14.0	17.2	2.0	Al <sub>2</sub> O <sub>3</sub> 96%	6.15g
K663377	9.3	6.6	3.3	7.7	1.9	Al <sub>2</sub> O <sub>3</sub> 99%	0.94g	E187121	21.1	18.9	7.1	21.2	5.7	Al <sub>2</sub> O <sub>3</sub> 96%	19.40g
K674077	9.6	6.7	4.0	7.7	2.0	Al <sub>2</sub> O <sub>3</sub> 99%	0.91g	E201212	22.1	20.2	12.1	12.7	2.0	Al <sub>2</sub> O <sub>3</sub> 99%	10.37g
E693583	11.3	6.9	3.5	8.3	2.2	Al <sub>2</sub> O <sub>3</sub> 99%	1.16g	E261919	36.2	26.3	19.2	19.4	5.0	Al <sub>2</sub> O <sub>3</sub> 96%	24.50g
E693560	12.1	6.9	3.5	6.0	2.3	Al <sub>2</sub> O <sub>3</sub> 99%	1.08g	E262030	32.1	26.6	20.0	3.0	2.4	Al <sub>2</sub> O <sub>3</sub> 96%	4.57g
E693647	12.3	6.9	3.6	4.7	2.3	Al <sub>2</sub> O <sub>3</sub> 99%	0.96g	K361830	5.7	3.6	1.8	3.0	1.0	Al <sub>2</sub> O <sub>3</sub> 99%	0.14g
K714280	10.0	7.1	4.5	8.0	2.0	Al <sub>2</sub> O <sub>3</sub> 99%	0.93g	E382826	4.7	3.8	2.8	2.6	0.8	Al <sub>2</sub> O <sub>3</sub> 92%	0.07g
K723580	10.0	7.2	3.5	8.0	2.0	Al <sub>2</sub> O <sub>3</sub> 92%	1.12g	K392545	6.0	3.9	2.5	4.5	1.5	Al <sub>2</sub> O <sub>3</sub> 92%/99%	0.20g
K744754	9.0	7.4	4.7	5.4	1.2	Al <sub>2</sub> O <sub>3</sub> 99%	0.57g	K400345	6.0	4.0	0.3	4.5	1.5	Al <sub>2</sub> O <sub>3</sub> 99%	0.18g
K745050	10.0	7.4	5.0	5.0	2.0	Al <sub>2</sub> O <sub>3</sub> 92%	0.62g	K400545	6.0	4.0	0.5	4.5	1.5	Al <sub>2</sub> O <sub>3</sub> 99%	0.26g
K774653	10.2	7.7	4.6	6.0	1.9	Al <sub>2</sub> O <sub>3</sub> 99%	1.00g	K400745	6.0	4.0	0.7	4.5	1.5	Al <sub>2</sub> O <sub>3</sub> 99%	0.26g
E784213	9.7	7.8	4.2	13.3	2.9	Al <sub>2</sub> O <sub>3</sub> 96%	1.80g	K401145	6.0	4.0	1.1	4.5	1.5	Al <sub>2</sub> O <sub>3</sub> 99%	0.27g
K794774	10.0	7.9	4.7	7.4	2.0	Al <sub>2</sub> O <sub>3</sub> 92%	0.96g	K402530	6.0	4.0	2.5	3.0	1.0	Al <sub>2</sub> O <sub>3</sub> 92%/96%	0.12g
K845055	11.0	8.4	5.0	5.5	2.0	Al <sub>2</sub> O <sub>3</sub> 96%	0.84g	K402232	6.0	4.0	2.2	3.2	1.0	Al <sub>2</sub> O <sub>3</sub> 92%	0.13g
K845073	11.0	8.4	5.0	7.3	2.3	Al <sub>2</sub> O <sub>3</sub> 92%/96%	1.05g	K483147	7.8	4.8	3.1	4.7	1.0	Al <sub>2</sub> O <sub>3</sub> 92%/96%	0.24g
E845087	12.0	8.4	5.0	8.7	2.3	Al <sub>2</sub> O <sub>3</sub> 99%	1.65g	K503147	7.2	5.0	3.1	4.7	1.5	Al <sub>2</sub> O <sub>3</sub> 99%	0.34g
E883511	11.9	8.8	3.5	11.0	6.0	Al <sub>2</sub> O <sub>3</sub> 99%	3.14g	K542955	7.5	5.4	2.9	5.5	1.9	Al <sub>2</sub> O <sub>3</sub> 96%	0.40g
E895090	11.1	8.9	5.0	9.0	2.0	Al <sub>2</sub> O <sub>3</sub> 99%	1.57g	K553044	8.5	5.5	3.0	4.4	1.5	Al <sub>2</sub> O <sub>3</sub> 92%	0.34g
E895012	11.4	8.9	5.0	12.5	2.0	Al <sub>2</sub> O <sub>3</sub> 96%	2.03g	K553836	7.5	5.5	3.8	3.6	1.0	Al <sub>2</sub> O <sub>3</sub> 92%	0.21g
E926192	12.8	9.2	6.1	9.2	3.1	Al <sub>2</sub> O <sub>3</sub> 99%	1.86g	K563479	8.0	5.6	3.4	7.9	1.4	Al <sub>2</sub> O <sub>3</sub> 96%	0.48g
K936570	11.3	9.3	6.5	7.0	2.0	Al <sub>2</sub> O <sub>3</sub> 92%	0.98g	K603070	8.0	6.0	3.0	7.0	2.0	Al <sub>2</sub> O <sub>3</sub> 99%	0.70g
K956210	12.8	9.5	6.2	10.0	3.0	Al <sub>2</sub> O <sub>3</sub> 99%	2.14g	K613316	8.0	6.1	3.3	16.6	1.5	Al <sub>2</sub> O <sub>3</sub> 92%	1.30g
K975498	11.3	9.7	5.4	9.8	3.0	Al <sub>2</sub> O <sub>3</sub> 96%	1.95g	K633273	8.5	6.3	3.2	7.3	2.0	Al <sub>2</sub> O <sub>3</sub> 99%	0.80g
E977145	12.3	9.7	7.1	4.5	2.2	Al <sub>2</sub> O <sub>3</sub> 99%	0.87g	K674647	9.2	6.7	4.6	4.7	1.9	Al <sub>2</sub> O <sub>3</sub> 99%	0.61g
E995119	14.1	9.9	5.1	19.3	4.0	Al <sub>2</sub> O <sub>3</sub> 96%	4.66g	K703778	12.0	7.0	3.7	7.8	2.5	Al <sub>2</sub> O <sub>3</sub> 99%	1.48g
E995212	13.8	9.9	5.2	12.7	7.8	Al <sub>2</sub> O <sub>3</sub> 99%	4.64g	E793910	10.1	7.9	3.9	10.0	5.1	Al <sub>2</sub> O <sub>3</sub> 99%	1.80g
K995589	14.0	9.9	5.5	8.9	3.0	Al <sub>2</sub> O <sub>3</sub> 92%	2.15g	K804080	9.5	8.0	4.0	8.0	2.0	Al <sub>2</sub> O <sub>3</sub> 99%	1.25g
E106412	14.0	10.7	6.4	12.9	2.6	Al <sub>2</sub> O <sub>3</sub> 96%	3.15g	E904879	12.5	9.0	4.8	7.9	2.0	Al <sub>2</sub> O <sub>3</sub> 96%	1.60g
E117048	13.9	11.5	7.0	4.8	1.7	Al <sub>2</sub> O <sub>3</sub> 99%	1.25g	E976012	11.9	9.7	6.0	12.1	5.1	Al <sub>2</sub> O <sub>3</sub> 99%	2.61g

※ 上記のアルミナセラミックス製規格商品以外にも、ジルコニアセラミックス製アイレットガイドの製作も致しております。



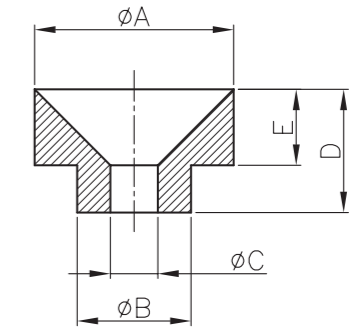
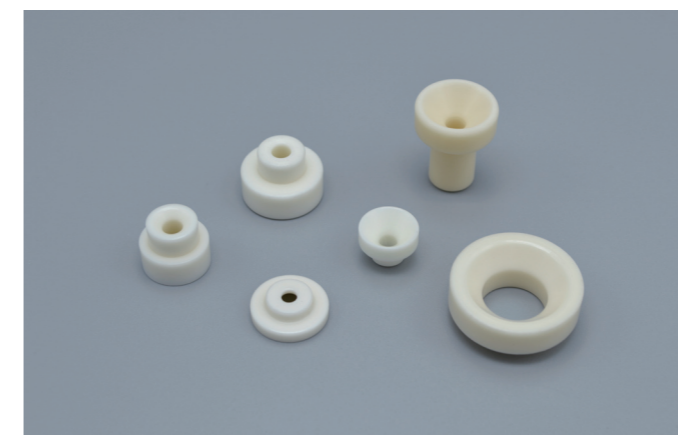
GROOVED EYELET GUIDE

MODEL NO	A	B	C	D	E	F	G	H	MAT'L	WEIGHT
GE794092	10	7.9	4	9.2	2	1.5	2	6.3	Al <sub>2</sub> O <sub>3</sub> 96%	1.2g
804080	10	7.9	4	8	2	1.5	1	7	Al <sub>2</sub> O <sub>3</sub> 99%	1.2g
GE995010	13	9.9	5	10	2.3	2.7	2	8	Al <sub>2</sub> O <sub>3</sub> 96%	2.0g
24-507001D	16	11.5	5.5	10.5	3	1.5	1	10.9	Al <sub>2</sub> O <sub>3</sub> 99%	3.5g
GE127010	16	12.2	7	10	2.3	2.7	1.8	10.2	Al <sub>2</sub> O <sub>3</sub> 96%	2.9g
GE138590	20	13	8.5	9	3	1.8	2	11	Al <sub>2</sub> O <sub>3</sub> 96%	3.9g
GE138570	17	13	8.5	7	2.3	1	1.5	12	Al <sub>2</sub> O <sub>3</sub> 96%	2.5g
GE181216	22	18.3	12	16.5	3.6	2	1.5	16.4	Al <sub>2</sub> O <sub>3</sub> 99%	10.6g
GE191415	25	19.2	14	15	5	1.5	1.5	17.6	Al <sub>2</sub> O <sub>3</sub> 92%	10.2g



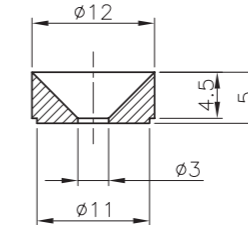
SPLIT EYELET GUIDE

MODEL NO	A	B	C	D	E	F	G	MAT'L	WEIGHT
SE391362	6.4	3.9	1.3	6.2	0.7	3.5	1.4	Al <sub>2</sub> O <sub>3</sub> 99%	0.2g
SE351447	5.2	3.5	1.4	4.7	0.9	4	1	Al <sub>2</sub> O <sub>3</sub> 99%	0.1g
SE351972	7.4	3.5	1.9	7.2	0.9	3.9	1.5	Al <sub>2</sub> O <sub>3</sub> 99%	0.2g
R653507	6.5	3.6	2	6.4	0.8	3	1.3	Al <sub>2</sub> O <sub>3</sub> 99%	0.2g
SE402257	6	4	2.2	5.7	1.3	3.9	1.3	Al <sub>2</sub> O <sub>3</sub> 99%	0.1g
SE462295	10	4.6	2.2	9.5	1.2	6.5	3	Al <sub>2</sub> O <sub>3</sub> 92%	0.8g
723177	10	7.1	3.1	9.4	1.4	7.7	2.3	Al <sub>2</sub> O <sub>3</sub> 99%	1.0g
R773756	10	7.6	3.6	9.6	3.3	5.6	2	Al <sub>2</sub> O <sub>3</sub> 96%	0.7g
SE134015	15	13	4	15	1.2	7.3	2	Al <sub>2</sub> O <sub>3</sub> 96%	3.4g
SE804578	10	8	4.5	7.8	3.6	6.2	2	Al <sub>2</sub> O <sub>3</sub> 99%	0.7g
SE834810	10.5	8.3	4.8	10.2	0.9	4	1.5	Al <sub>2</sub> O <sub>3</sub> 96%	0.7g
SE105712	12.5	10.5	5.7	12	4.5	8	3	Al <sub>2</sub> O <sub>3</sub> 99%	18.0g
SE156219	21	15	6.2	19.8	2.5	36	5	Al <sub>2</sub> O <sub>3</sub> 96%	18.7g
P126573	15	12	6.5	14.8	2.6	7.2	3.5	Al <sub>2</sub> O <sub>3</sub> 99%	2.6g
SE136517	19	13	6.5	17	6	19.5	5	Al <sub>2</sub> O <sub>3</sub> 96%	6.8g

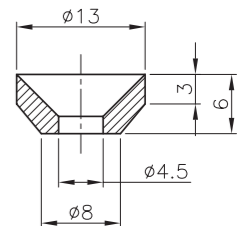


DIAGNOL EYELET GUIDE

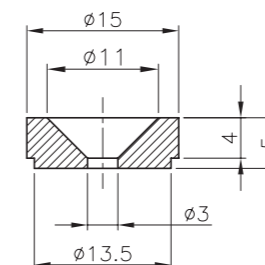
MODEL NO	A	B	C	D	E	MAT'L	WEIGHT
153050	15	8.9	3	4.9	2.6	Al <sub>2</sub> O <sub>3</sub> 99%	1.7g
DE123580	12	6.9	3.5	8	4	Al <sub>2</sub> O <sub>3</sub> 99%	1.5g
DE174021	17	9.7	4	21	6.5	Al <sub>2</sub> O <sub>3</sub> 99%	7.3g
DE174012	17	9.8	4	12	7	Al <sub>2</sub> O <sub>3</sub> 99%	5.7g
C104011	13.5	9.9	4	11	6	Al <sub>2</sub> O <sub>3</sub> 99%	3.5g
DE251295	25	18.7	12.5	9.5	6.5	Al <sub>2</sub> O <sub>3</sub> 99%	9.8g



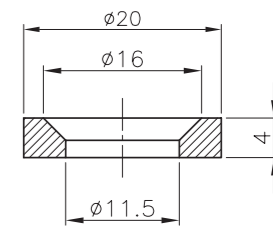
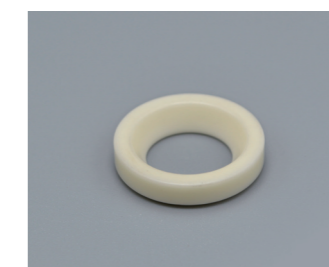
NAME	Diagonal Guide
NO	<b>DE123050</b>
MAT'L	Al <sub>2</sub> O <sub>3</sub> 96%
WEIGHT	1.4g



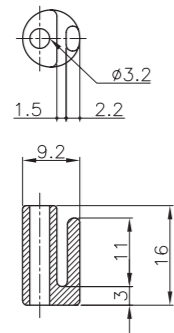
NAME	Diagonal Guide
NO	<b>DG134560</b>
MAT'L	Al <sub>2</sub> O <sub>3</sub> 99%
WEIGHT	1.6g



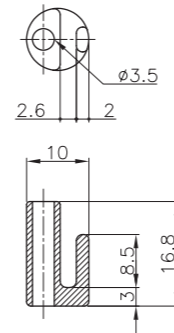
NAME	Diagonal Guide
NO	<b>DE153050</b>
MAT'L	Al <sub>2</sub> O <sub>3</sub> 96%
WEIGHT	2.3g



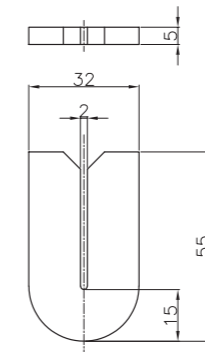
NAME	Diagonal Guide
NO	<b>DG201140</b>
MAT'L	Al <sub>2</sub> O <sub>3</sub> 99%
WEIGHT	2.5g



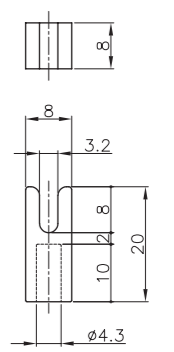
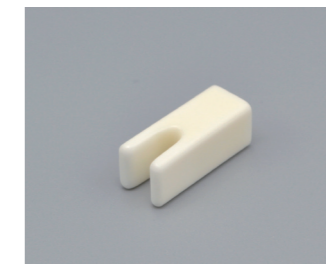
NAME	Slit Guide
NO	<b>200-070</b>
MAT'L	Al <sub>2</sub> O <sub>3</sub> 99%
WEIGHT	2.2g



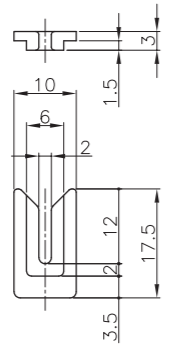
NAME	Slit Guide
NO	<b>27-3210</b>
MAT'L	Al <sub>2</sub> O <sub>3</sub> 99%
WEIGHT	2.3g



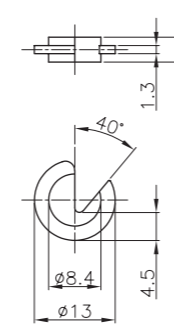
NAME	Slit Guide
NO	<b>S322055</b>
MAT'L	Al <sub>2</sub> O <sub>3</sub> 99%
WEIGHT	29.5g



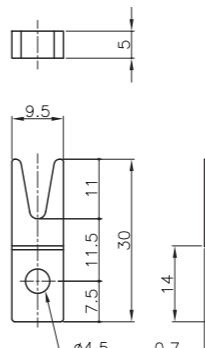
NAME	Slit Guide
NO	<b>S803220</b>
MAT'L	Al <sub>2</sub> O <sub>3</sub> 99%
WEIGHT	3.5g



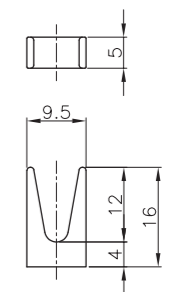
NAME	Slit Guide
NO	<b>571619</b>
MAT'L	Al <sub>2</sub> O <sub>3</sub> 99%
WEIGHT	1.1g



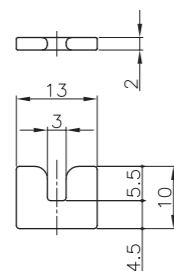
NAME	Slit Guide
NO	<b>S132012</b>
MAT'L	Al <sub>2</sub> O <sub>3</sub> 99%
WEIGHT	0.9g



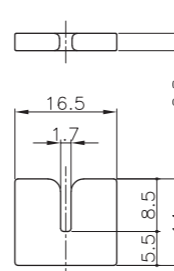
NAME	Slit Guide
NO	<b>S953065</b>
MAT'L	Al <sub>2</sub> O <sub>3</sub> 99%
WEIGHT	3.7g



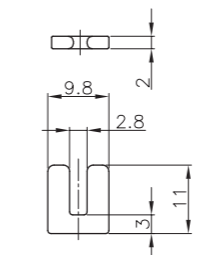
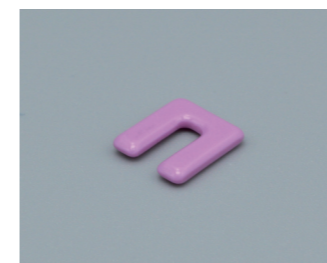
NAME	Slit Guide
NO	<b>S956516</b>
MAT'L	Al <sub>2</sub> O <sub>3</sub> 99%
WEIGHT	1.6g



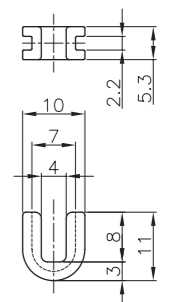
NAME	Slit Guide
NO	<b>S133010</b>
MAT'L	Al <sub>2</sub> O <sub>3</sub> 99%
WEIGHT	0.8g



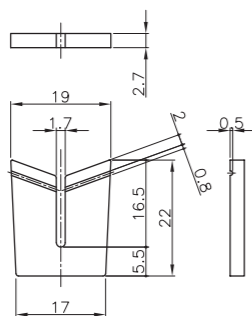
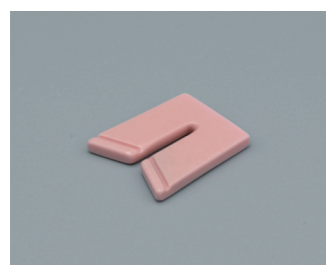
NAME	Slit Guide
NO	<b>172014</b>
MAT'L	Al <sub>2</sub> O <sub>3</sub> 99%
WEIGHT	2.2



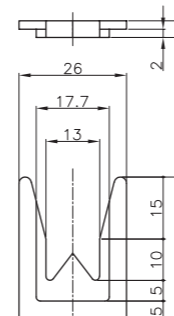
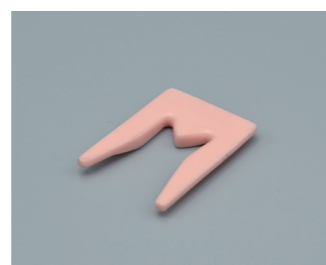
NAME	Slit Guide
NO	<b>S982811</b>
MAT'L	Al <sub>2</sub> O <sub>3</sub> 96%
WEIGHT	0.5g



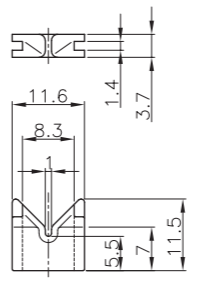
NAME	S.Slit Guide
NO	<b>S104011</b>
MAT'L	Al <sub>2</sub> O <sub>3</sub> 96%
WEIGHT	0.9g



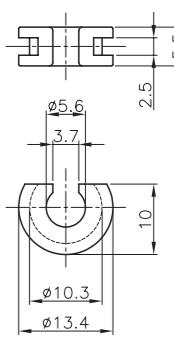
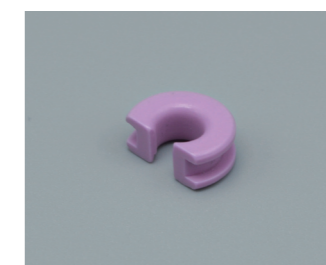
NAME	Slit Guide
NO	<b>S191722</b>
MAT'L	Al <sub>2</sub> O <sub>3</sub> 99%
WEIGHT	3.3g



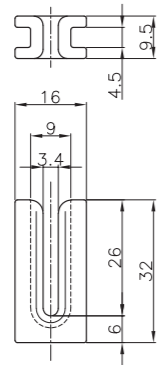
NAME	Slit Guide
NO	<b>261335</b>
MAT'L	Al <sub>2</sub> O <sub>3</sub> 99%
WEIGHT	5.7g



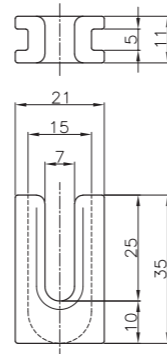
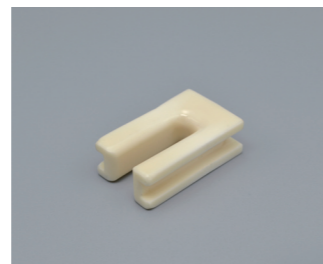
NAME	S.Slit Guide
NO	<b>S111011</b>
MAT'L	Al <sub>2</sub> O <sub>3</sub> 99%
WEIGHT	1.2g



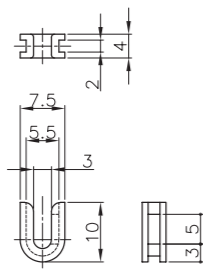
NAME	S.Slit Guide
NO	<b>S135610</b>
MAT'L	Al <sub>2</sub> O <sub>3</sub> 96%
WEIGHT	1.2g



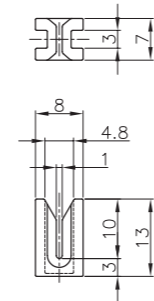
NAME	S.Slit Guide
NO	<b>S163432</b>
MAT'L	Al <sub>2</sub> O <sub>3</sub> 96%
WEIGHT	9.3g



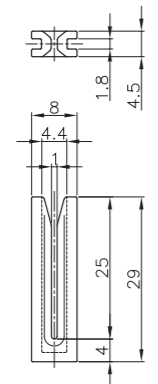
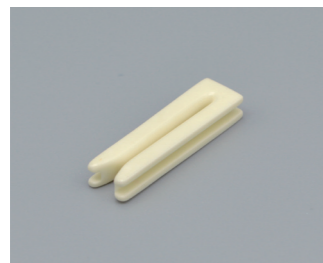
NAME	S.Slit Guide
NO	<b>S217035</b>
MAT'L	Al <sub>2</sub> O <sub>3</sub> 99%
WEIGHT	18.4g



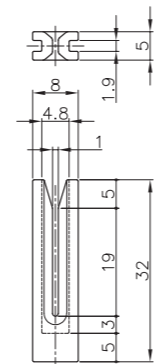
NAME	S.Slit Guide
NO	<b>S753010</b>
MAT'L	Al <sub>2</sub> O <sub>3</sub> 99%
WEIGHT	0.4g



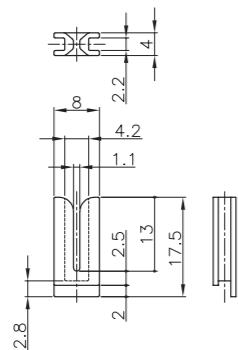
NAME	S.Slit Guide
NO	<b>S801013</b>
MAT'L	Al <sub>2</sub> O <sub>3</sub> 96%
WEIGHT	1.5g



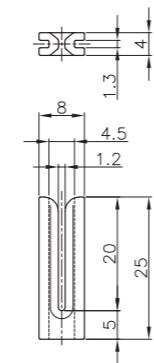
NAME	S.Slit Guide
NO	<b>S801029</b>
MAT'L	Al <sub>2</sub> O <sub>3</sub> 99%
WEIGHT	2.3g



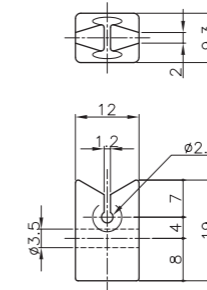
NAME	S.Slit Guide
NO	<b>S801032</b>
MAT'L	Al <sub>2</sub> O <sub>3</sub> 99%
WEIGHT	2.6g



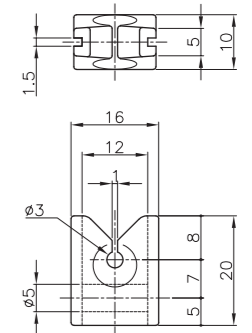
NAME	S.Slit Guide
NO	<b>S801018</b>
MAT'L	Al <sub>2</sub> O <sub>3</sub> 99%
WEIGHT	0.9g



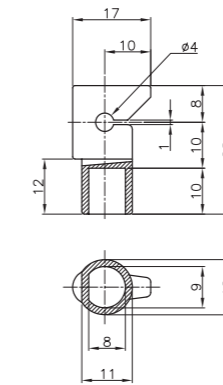
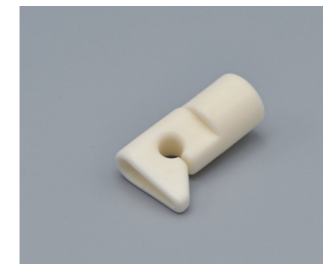
NAME	S.Slit Guide
NO	<b>S801225</b>
MAT'L	Al <sub>2</sub> O <sub>3</sub> 96%
WEIGHT	1.8g



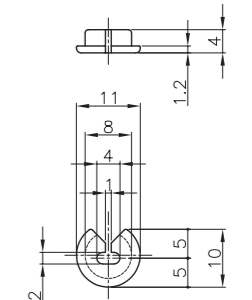
NAME	Hook Guide
NO	<b>H121219</b>
MAT'L	Al <sub>2</sub> O <sub>3</sub> 96%
WEIGHT	5.1g



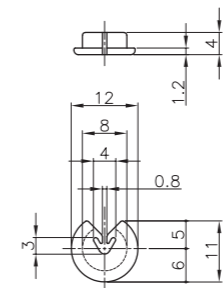
NAME	Hook Guide
NO	<b>H163021</b>
MAT'L	Al <sub>2</sub> O <sub>3</sub> 99%
WEIGHT	5.6g



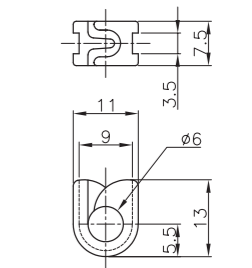
NAME	Hook Guide
MAT'L	<b>H284017</b>
MAT'L	Al <sub>2</sub> O <sub>3</sub> 99%
WEIGHT	6.4g



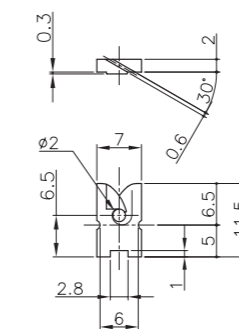
NAME	Double Hook Guide
NO	<b>H104011</b>
MAT'L	Al <sub>2</sub> O <sub>3</sub> 99%
WEIGHT	0.6g



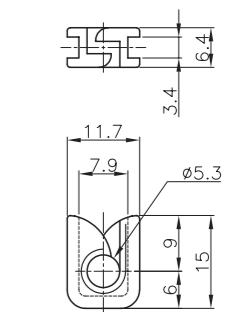
NAME	Double Hook Guide
NO	<b>H114112</b>
MAT'L	Al <sub>2</sub> O <sub>3</sub> 99%
WEIGHT	0.7g



NAME	Double Hook Guide
NO	<b>H116013</b>
MAT'L	Al <sub>2</sub> O <sub>3</sub> 99%
WEIGHT	1.9g



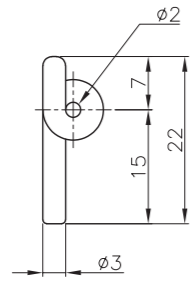
NAME	Double Hook Guide
NO	<b>H122011</b>
MAT'L	Al <sub>2</sub> O <sub>3</sub> 99%
WEIGHT	0.5g



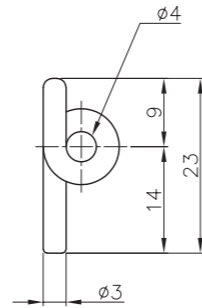
NAME	Double Hook Guide
NO	<b>H125016</b>
MAT'L	Al <sub>2</sub> O <sub>3</sub> 99%
WEIGHT	1.7g



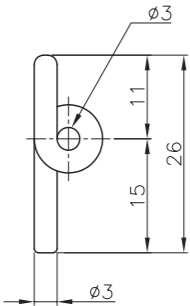




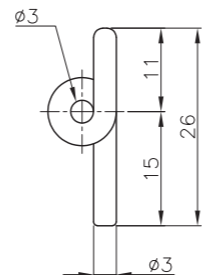
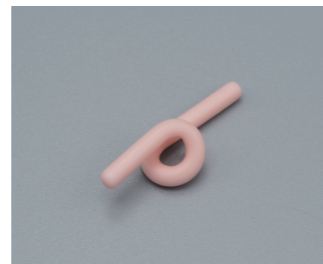
NAME	Snail Guide
NO	<b>R322-2015</b>
MAT'L	Al <sub>2</sub> O <sub>3</sub> 99%
WEIGHT	0.8g



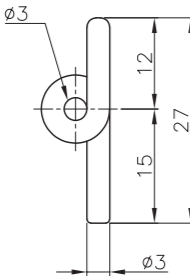
NAME	Snail Guide
NO	<b>R323-4014</b>
MAT'L	Al <sub>2</sub> O <sub>3</sub> 99%
WEIGHT	1.1g



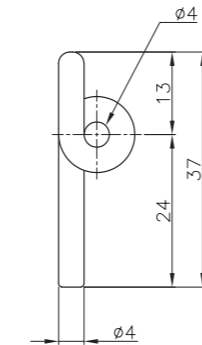
NAME	Snail Guide
NO	<b>R326-3015</b>
MAT'L	Al <sub>2</sub> O <sub>3</sub> 99%
WEIGHT	1.3g



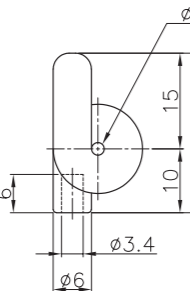
NAME	Snail Guide
NO	<b>L326-3015</b>
MAT'L	Al <sub>2</sub> O <sub>3</sub> 99%
WEIGHT	1.0g



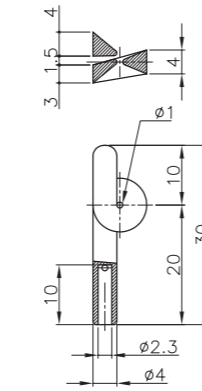
NAME	Snail Guide
NO	<b>L327-3015</b>
MAT'L	Al <sub>2</sub> O <sub>3</sub> 99%
WEIGHT	1.2g



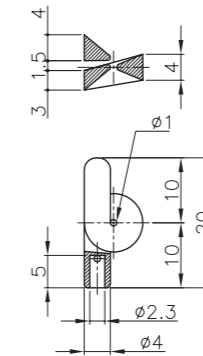
NAME	Snail Guide
NO	<b>R437-4024</b>
MAT'L	Al <sub>2</sub> O <sub>3</sub> 99%
WEIGHT	2.9g



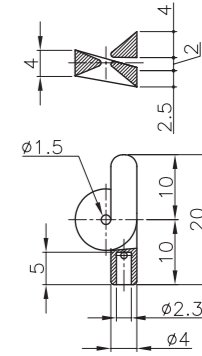
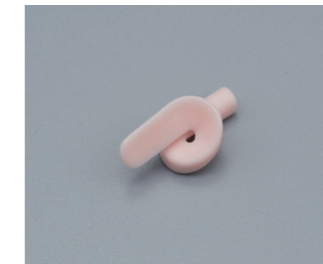
NAME	Snail Guide
NO	<b>R625-2010</b>
MAT'L	Al <sub>2</sub> O <sub>3</sub> 99%
WEIGHT	4.7g



NAME	Snail Guide
NO	<b>R430-1020</b>
MAT'L	Al <sub>2</sub> O <sub>3</sub> 99%
WEIGHT	1.9g

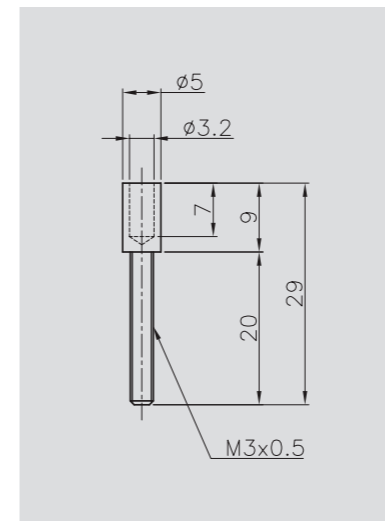


NAME	Snail Guide
NO	<b>R420-1010</b>
MAT'L	Al <sub>2</sub> O <sub>3</sub> 99%
WEIGHT	1.2g

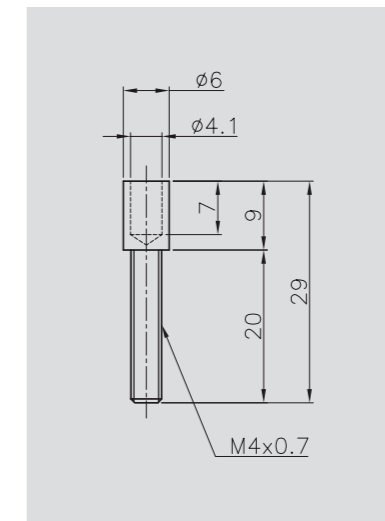


NAME	Snail Guide
NO	<b>L420-1510</b>
MAT'L	Al <sub>2</sub> O <sub>3</sub> 99%
WEIGHT	1.1g

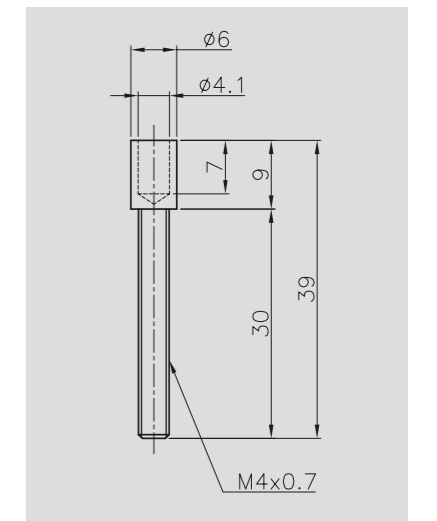
**HOLDER**



NAME	Holder
NO	<b>3 x 20</b>
WEIGHT	1.5g



NAME	Holder
NO	<b>4 x 20</b>
WEIGHT	2.6g

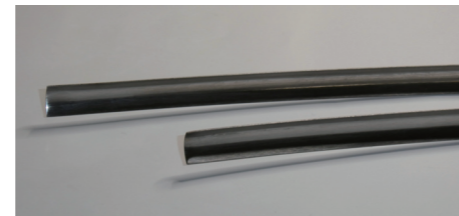


NAME	Holder
NO	<b>4 x 30</b>
WEIGHT	3.3g

弓板プレート

溝付弓板用交換プレートを使用する事により、弓板自体の摩耗を防ぐ事が出来ますので、現場作業での時間短縮が可能となります。

又、SK5素材に特殊処理を施す事で、耐摩耗性・滑りに優れており、高耐久性となる事により部品交換の頻度も格段に減少致します。



TYPE-A

TYPE-B

総全長:1860.9mm  
素材:SK5  
板厚:0.3t, 0.4t

総全長:1860.9mm

弓板用セラミックテープ

通常弓板が摩耗しますと弓板自体の取替が必要となり、交換作業が非常に煩雑で且つ高コストがかかります。

セラミックテープを使用する事により、摩耗した際はセラミックテープのみの交換で済みますので、コスト低減にもなりますし、作業時間の短縮にも大きく貢献致します。

※弓板への取付方法は、両面テープでの貼付です。

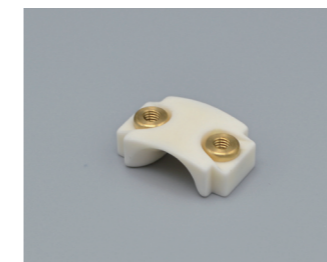
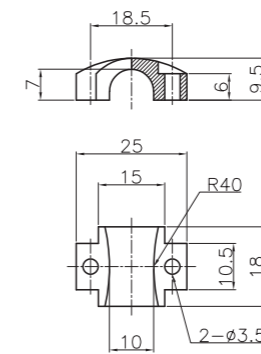


品番	幅	長さ	厚み
CT732005	73	20	0.5t
CT832005	83	20	0.5t
CT932005	93	20	0.5t

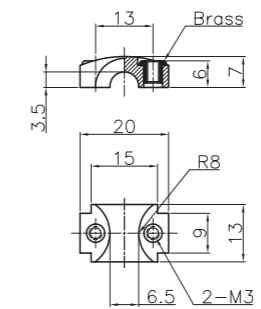
材質:ジルコニアセラミックス製  
研磨:鏡面研磨仕上げ(片面のみ)



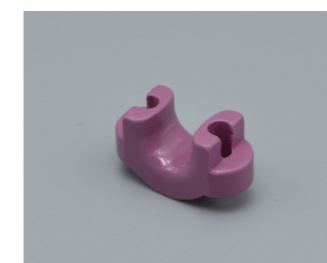
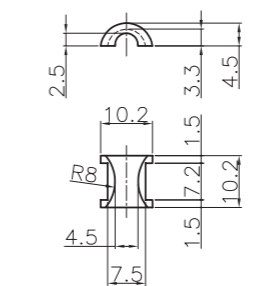
NAME	Bow guide
NO	<b>C3-130613</b>
MAT'L	Al <sub>2</sub> O <sub>3</sub> 99%
WEIGHT	7.2g



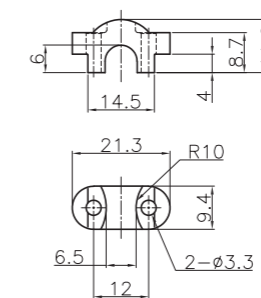
NAME	Bow guide
NO	<b>C8-M</b>
MAT'L	Al <sub>2</sub> O <sub>3</sub> 99%
WEIGHT	4.3g



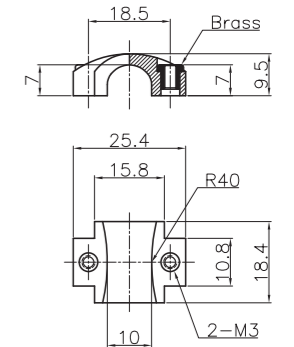
NAME	Bow guide
NO	<b>C6-983999</b>
MAT'L	Al <sub>2</sub> O <sub>3</sub> 99%
WEIGHT	0.5g



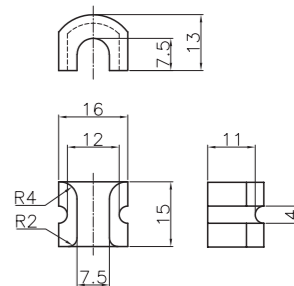
NAME	Bow guide
NO	<b>C9-226694</b>
MAT'L	Al <sub>2</sub> O <sub>3</sub> 92%, 96%
WEIGHT	3.7g



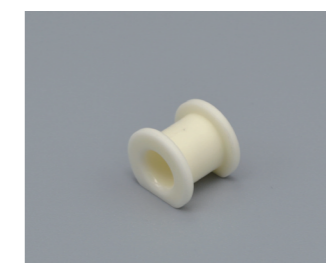
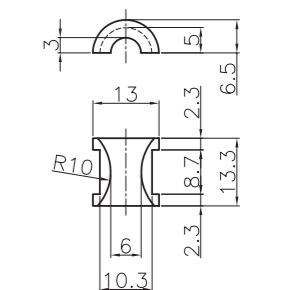
NAME	Bow guide
NO	<b>C1-M</b>
MAT'L	Al <sub>2</sub> O <sub>3</sub> 99%
WEIGHT	8.2g



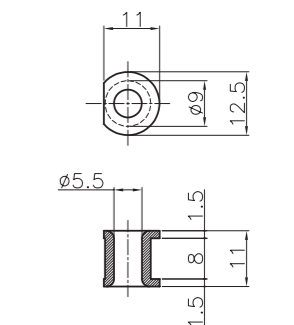
NAME	Bow guide
NO	<b>CNI-125618</b>
MAT'L	Al <sub>2</sub> O <sub>3</sub> 99%
WEIGHT	6.9g



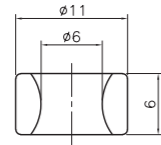
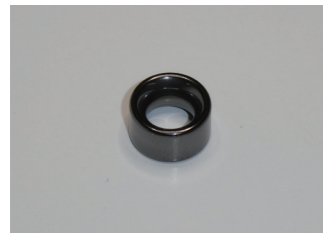
NAME	Bow guide
NO	<b>C8-130613</b>
MAT'L	Al <sub>2</sub> O <sub>3</sub> 99%
WEIGHT	1.5g



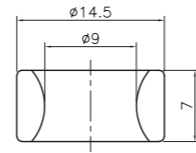
NAME	Bow guide
NO	<b>BC-125511</b>
MAT'L	Al <sub>2</sub> O <sub>3</sub> 99%
WEIGHT	2.1g



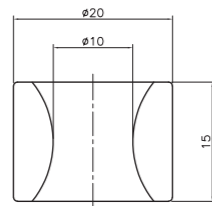
SIC GUIDE



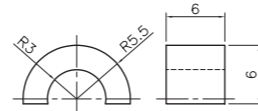
NAME	Φ6 Ring
NO	<b>TR110606</b>
MAT'L	SiC 99%
WEIGHT	1.1g



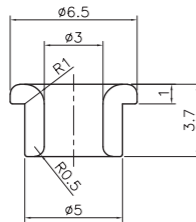
NAME	Φ9 Ring
NO	<b>TR140907</b>
MAT'L	SiC 99%
WEIGHT	1.8g



NAME	Φ11 Ring
NO	<b>TR201015</b>
MAT'L	SiC 99%
WEIGHT	9.5g

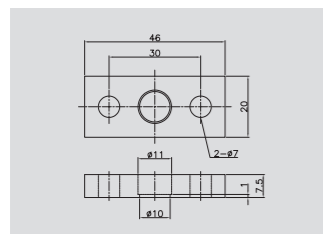


NAME	Φ6 Harf Ring
NO	<b>TR110606H</b>
MAT'L	SiC 99%
WEIGHT	0.5g



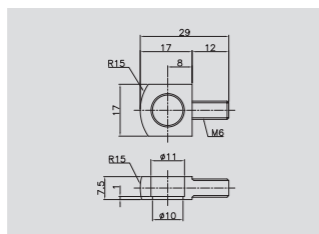
NAME	Eyelet Guide
NO	<b>TR050337</b>
MAT'L	SiC 99%
WEIGHT	0.19g

SIC GUIDE BRACKET



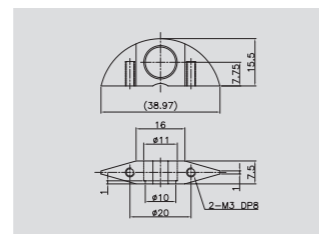
アルミブラケットA (平板型)

NO	<b>GKA-6</b>
MAT'L	AL



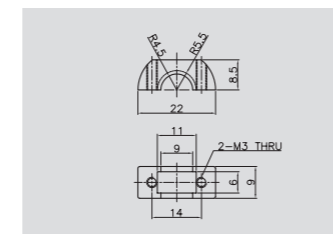
アルミブラケットB (ネジ付型)

NO	<b>GKB-6</b>
MAT'L	AL



アルミブラケットC (半月型)

NO	<b>GKC-6</b>
MAT'L	AL



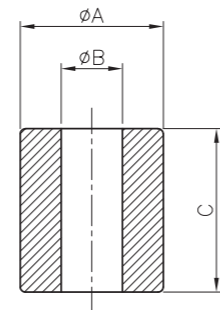
半割れパンチャー用アルミブラケット

NO	<b>GKHB-6h</b>
MAT'L	AL



MODEL NO	A(φ)	B	MAT'L	WEIGHT
B020011	2	11	Al <sub>2</sub> O <sub>3</sub> 99%	0.1g
B020040	2	40	Al <sub>2</sub> O <sub>3</sub> 92%	0.5g
B025021	2.5	21	Al <sub>2</sub> O <sub>3</sub> 99%	0.4g
B030007	3	7	Al <sub>2</sub> O <sub>3</sub> 92%	0.2g
B030008	3	8	Al <sub>2</sub> O <sub>3</sub> 99%	0.2g
B030015	3	15	Al <sub>2</sub> O <sub>3</sub> 99%	0.4g
B030016	3	16	Al <sub>2</sub> O <sub>3</sub> 99%	0.4g
B030018	3	18	Al <sub>2</sub> O <sub>3</sub> 99%	0.5g
B030020	3	20	Al <sub>2</sub> O <sub>3</sub> 99%	0.6g
B030030	3	30	Al <sub>2</sub> O <sub>3</sub> 99%	0.8g
B030033	3	33	Al <sub>2</sub> O <sub>3</sub> 99%	0.9g
B030037	3	37	Al <sub>2</sub> O <sub>3</sub> 99%	1.0g
B034028	3.4	28	Al <sub>2</sub> O <sub>3</sub> 99%	1.0g
B040030	4	30	Al <sub>2</sub> O <sub>3</sub> 96%	1.4g
B042028	4.2	28	Al <sub>2</sub> O <sub>3</sub> 99%	1.5g
B050023	5	23	Al <sub>2</sub> O <sub>3</sub> 99%	1.7g
B050025	5	25	Al <sub>2</sub> O <sub>3</sub> 99%	1.9g
B050100	5	100	Al <sub>2</sub> O <sub>3</sub> 99%	7.5g
B060020	6	20	Al <sub>2</sub> O <sub>3</sub> 99%	2.2g
B060025	6	25	Al <sub>2</sub> O <sub>3</sub> 99%	2.7g
B060035	6	35	Al <sub>2</sub> O <sub>3</sub> 99%	3.9g
B060040	6	40	Al <sub>2</sub> O <sub>3</sub> 99%	4.4g
B060050	6	50	Al <sub>2</sub> O <sub>3</sub> 99%	5.4g
B060053	6	53	Al <sub>2</sub> O <sub>3</sub> 99%	5.2g
B060060	6	60	Al <sub>2</sub> O <sub>3</sub> 99%	6.6g
B060150	6	150	Al <sub>2</sub> O <sub>3</sub> 96%	14.3g
B080012	8	12	Al <sub>2</sub> O <sub>3</sub> 99%	2.4g
B080015	8	15	Al <sub>2</sub> O <sub>3</sub> 99%	3.0g
B080025	8	25	Al <sub>2</sub> O <sub>3</sub> 99%	4.9g
B080030	8	30	Al <sub>2</sub> O <sub>3</sub> 99%	5.9g
B080035	8	35	Al <sub>2</sub> O <sub>3</sub> 99%	6.9g
B080040	8	40	Al <sub>2</sub> O <sub>3</sub> 99%	7.8g
B080050	8	50	Al <sub>2</sub> O <sub>3</sub> 99%	9.9g
B080060	8	60	Al <sub>2</sub> O <sub>3</sub> 99%	11.7g
B100030	10	30	Al <sub>2</sub> O <sub>3</sub> 99%	9.0g

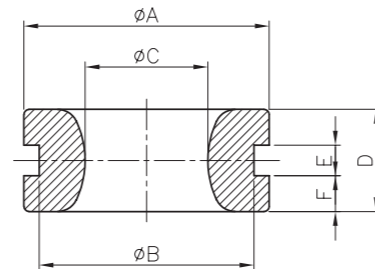
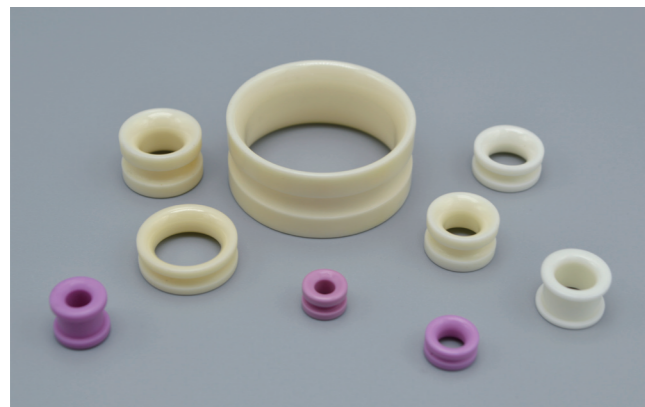
※ 上記の規格商品以外にも、各種サイズを取り揃えておりますので、お問合せ下さい。



MODEL NO	A	B	C	MAT'L	WEIGHT	MODEL NO	A	B	C	MAT'L	WEIGHT
T403013	4	3	13	Al <sub>2</sub> O <sub>3</sub> 96%	1.4g	T703010	7	3	10	Al <sub>2</sub> O <sub>3</sub> 96%	1.5g
T492756	4.9	2.7	5.6	Al <sub>2</sub> O <sub>3</sub> 92%	2.0g	T805021	8	5	21	Al <sub>2</sub> O <sub>3</sub> 99%	1.1g
T491459	4.9	1.4	5.9	Al <sub>2</sub> O <sub>3</sub> 99%	3.8g	T802216	8	2.2	16	Al <sub>2</sub> O <sub>3</sub> 99%	1.3g
T503028	5	3	28	Al <sub>2</sub> O <sub>3</sub> 96%	2.3g	T906033	9	6	33	Al <sub>2</sub> O <sub>3</sub> 92%	0.9g
T503020	5	3	20	Al <sub>2</sub> O <sub>3</sub> 96%	2.8g	T902010	9	2	10	Al <sub>2</sub> O <sub>3</sub> 92%	0.3g
T602833	6	2.8	33	Al <sub>2</sub> O <sub>3</sub> 96%	3.0g	T105877	10	5.8	7.7	Al <sub>2</sub> O <sub>3</sub> 96%	0.4g
T603020	6	3	20	Al <sub>2</sub> O <sub>3</sub> 99%	2.9g	T102288	10	2.2	8.8	Al <sub>2</sub> O <sub>3</sub> 96%	0.3g
T603218	6	3.2	18	Al <sub>2</sub> O <sub>3</sub> 92%	1.1g	T106233	10	6.2	33	Al <sub>2</sub> O <sub>3</sub> 92%	4.9g
T673333	6.7	3.3	33	Al <sub>2</sub> O <sub>3</sub> 92%	3.3g	T201018	20	10	18	Al <sub>2</sub> O <sub>3</sub> 96%	12.7g
T704332	7	4.3	32	Al <sub>2</sub> O <sub>3</sub> 99%	2.6g	T403225	40	32	25	Al <sub>2</sub> O <sub>3</sub> 92%	47.1g

※ 上記の規格商品以外にも、各種サイズを取り揃えておりますので、お問合せ下さい。

GROOVE RING GUIDE

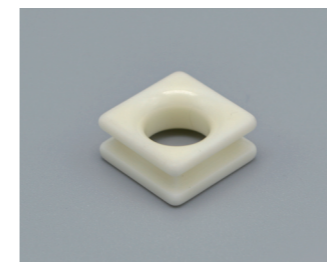
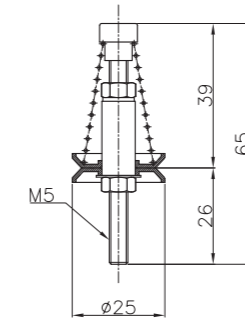


MODEL NO	A	B	C	D	E	F	MAT'L	WEIGHT
B803752	8	5.1	3.7	5.2	1.6	1.8	Al <sub>2</sub> O <sub>3</sub> 96%	0.5g
B954585	9.5	7.5	4.5	8.5	4.5	2	Al <sub>2</sub> O <sub>3</sub> 96%	1.2g
B914846	9.1	7.5	4.8	4.6	1.9	1.7	Al <sub>2</sub> O <sub>3</sub> 96%	0.6g
B136780	13	9.8	6.7	8	3	2.5	Al <sub>2</sub> O <sub>3</sub> 99%	2.1g
B127080	12	10	7	8	5.6	1.2	Al <sub>2</sub> O <sub>3</sub> 99%	1.5g
B137760	13.5	10.5	7.7	6	2	2	Al <sub>2</sub> O <sub>3</sub> 99%	1.5g
B158310	15.5	12	8.3	10	3.3	3.3	Al <sub>2</sub> O <sub>3</sub> 99%	3.6g
B181260	18	15.3	12	6	2	2	Al <sub>2</sub> O <sub>3</sub> 99%	2.3g
B241475	24	20	14.5	7.5	3.5	2	Al <sub>2</sub> O <sub>3</sub> 99%	6.0g
B352815	35	33	28	15	5	5	Al <sub>2</sub> O <sub>3</sub> 99%	15.2g

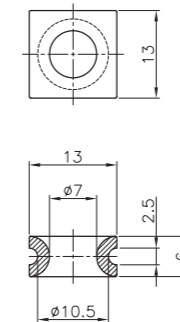
※ 上記の規格商品以外にも、各種サイズを取り揃えておりますので、お問合せ下さい。



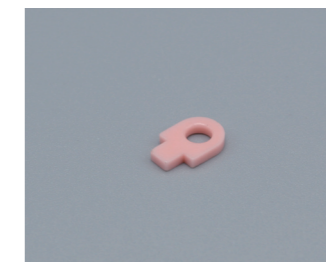
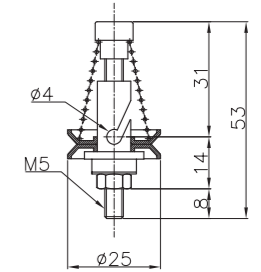
NAME	Spring Tension
NO	261830
MAT'L	Al <sub>2</sub> O <sub>3</sub> 92%
WEIGHT	17.1g



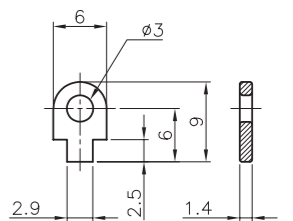
NAME	Groove Wing Guide
NO	130705
MAT'L	Al <sub>2</sub> O <sub>3</sub> 99%
WEIGHT	2.2g



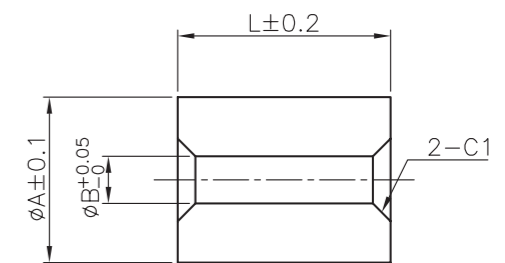
NAME	Spring Tension
NO	261830-C
MAT'L	Al <sub>2</sub> O <sub>3</sub> 96%
WEIGHT	17.1g



NAME	Loop Guide
NO	603090
MAT'L	Al <sub>2</sub> O <sub>3</sub> 99%
WEIGHT	0.2g



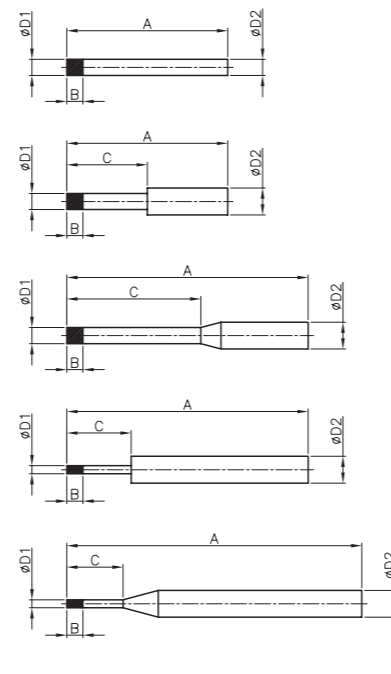
CERAMIC WELDING TUBE



品番	$\phi A$	$\phi B$	L
JT060808	6	0.8	8
JT061008	6	1.0	8
JT061208	6	1.2	8
JT061508	6	1.5	8
JT102012	10	2.0	12

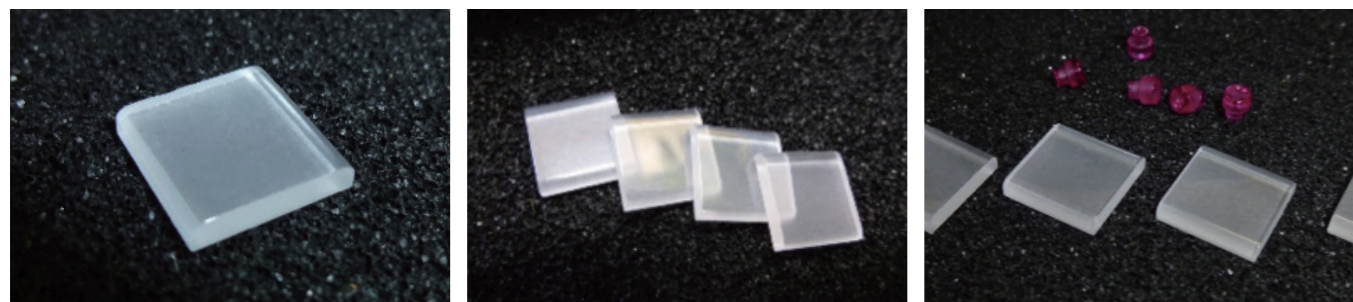
巻線ルビースズル・巻線超硬ノズル

- ※ ルビースズルは、仕上げ面の精度が高く、ワイヤーの摩擦抵抗を抑える事が出来ます。
- ※ 超硬ノズルは特殊コイル巻きに対応した変則型形状も製作可能です。  
又、一般的には先端を楕円形状にする際、R加工が難しい為ピンホールが出来易いですが、特殊研磨技術により問題を解消しました。
- ※ ユーザー様図面にて各種オーダー製作しております。



サファイアクランプ板

- ※ サファイアクランプ板は、モーター製造に於いて、巻線工程でのワイヤー送線を一定にする時に、2枚のサファイア板で挟み込みテンションを付ける為に使用されます。
- ※ ワイヤーに対してキズを与えない様に、サファイア板の片面及び走行方向側の角R面には、鏡面研磨を施しております。

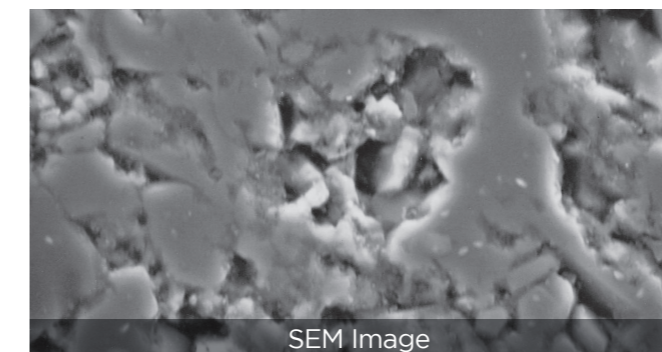


物性表

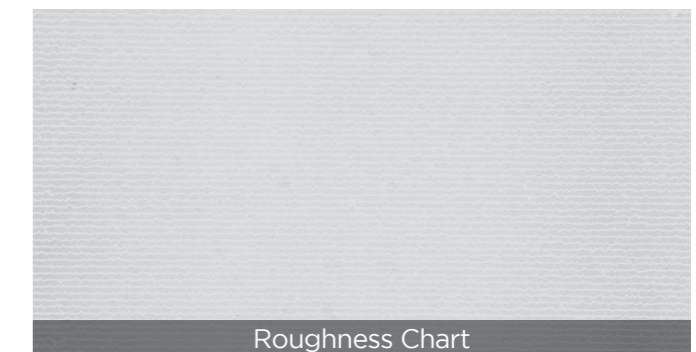
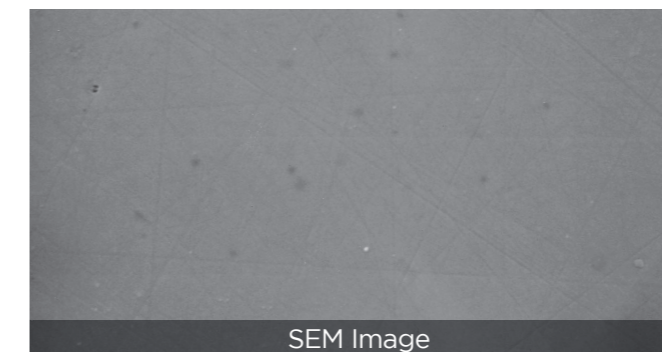
	アルミナ			ジルコニア	炭化珪素	窒化珪素
	Al <sub>2</sub> O <sub>3</sub> 99%	Al <sub>2</sub> O <sub>3</sub> 96%	Al <sub>2</sub> O <sub>3</sub> 92%	ZrO <sub>2</sub>	SiC	Si <sub>3</sub> N <sub>4</sub>
密度 (g/cm <sup>3</sup> )	3.9	3.8	3.6	6	3.2	3.2
硬度 (kg/mm <sup>2</sup> )	1800	1600	1600	1250	2700	1500
ビッカース硬度 ロード 500g (Gpa)	17.5	13.7	13.5	10.7 ~ 13.2	22.0 ~ 23.0	13.9 ~ 14.0
曲げ強度 (kg/mm <sup>2</sup> )	38	30	30	130	55	70
破壊靱性 (MPa/m <sup>1/2</sup> )	4.0	3.0	3.0	9.0	3.0	7.0
ヤング率 (x10 <sup>4</sup> kgf/mm <sup>2</sup> )	4.0	3.7	3.7	2.1	4.0	3.0
熱膨張係数 (x10 <sup>-6</sup> /°C)	8.0	7.9	7.9	9.2	4.2	2.8
熱伝導率 (W/m·k)	34	24	17	3	140	34
耐熱衝撃 (ΔT:°C)	250	200	200	320	400	700
最高使用温度 (°C)	1600	1500	1500	800	1500	1200
耐薬品性	酸	◎	○	○	◎	○
	アルカリ	◎	○	○	○	○

SURFACE FINISH

Normal Polishing Finished



Diamond Polishing Finished

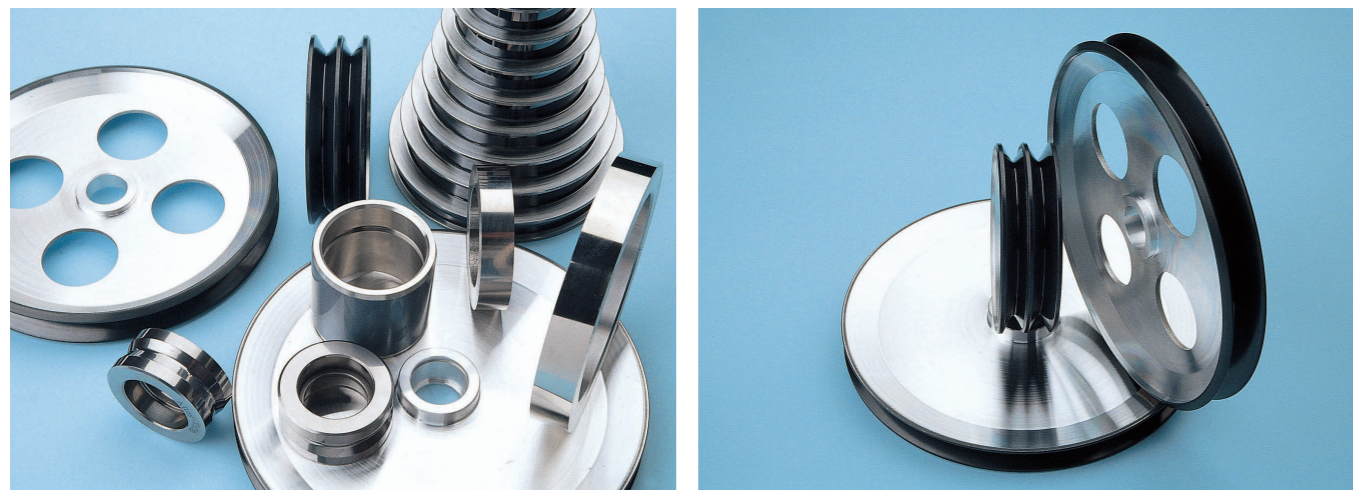


### NCT製セラミック溶射の特長

- 高耐久性：ローカイド溶射により寿命が格段に向上
- コストパフォーマンスに優れている
- 溶射面の平滑性
- 布入りベークへもセラミック溶射施工可(※プラズマ溶射限定)

#### APPLICATIONS

- Guide Rollers
- Capstans
- Wire Drawing Ring
- Pulleys



※ 上記商品は、ユーザー様の図面にて、母材加工からオーダー製作をさせて頂いております。  
 ※ 母材は、各種素材対応可能です。  
 ※ 溶射材料は、セラミック材料や金属製材料等、用途に応じた溶射材料でのご提案をさせて頂きます。

### ローカイドコーティングの種類と特性

		ローカイド "A"	ローカイド "ZS"	ローカイド "Z"	ローカイド "C"
特 徴		高純酸化アルミのコーティングで、硬度が高く、あらゆる酸化物の中、最も強度が高い。	珪酸ジルコニウムのコーティングで、ローカイド"A"より少々密度が高い。珪酸分含有量が高いため、気孔の約半分が密閉気孔で浸透率が低い。	安定シリコニアのコーティングで、ローカイド"A"及び"ZS"より密度は高い。気孔率は同じ、耐火度が高く熱伝導率が低いので、優れた断熱材となる。	酸化クロームのコーティングで、気孔率が極めて低い。
	化学組成				
	ZrO <sub>2</sub>	-	64.12%	94.57%	-
	Al <sub>2</sub> O <sub>3</sub>	98.55%	1.42%	0.63%	3.7%
	SiO <sub>2</sub>	0.58%	33.22%	0.33%	5.6%
	Fe <sub>2</sub> O <sub>3</sub>	0.10%	0.14%	0.33%	0.27%
	TiO <sub>3</sub>	0.04%	0.19%	0.39%	-
	Na <sub>2</sub> O	0.31%	0.07%	0.02%	-
	Cr <sub>2</sub> O <sub>3</sub>	-	-	-	90.0%
	MgO	0.23%	-	-	0.11%
	CaO	0.19%	0.57%	3.37%	-
溶射層の色		白色	淡黄色	淡褐色	黒色
被溶射材料		金属、セラミック、その他	金属、セラミック、その他	金属、セラミック、その他	金属、セラミック、その他
溶射の最適厚さ		0.1mm ~ 1.0mm	0.1mm ~ 1.0mm	0.1mm ~ 1.0mm	0.1mm ~ 1.0mm
結晶状態		γタイプアルミナ	立方晶及び珪酸ガラス	立方晶	六方晶
表面仕上		数百ミクロン	数百ミクロン	数百ミクロン	数百ミクロン
圧縮強度		良好	良好	良好	良好
気孔率		8 ~ 12%	8 ~ 12%(4%open)	8 ~ 12%(7%open)	4%(1.9%open)
接着強さ		42 ~ 70kg/cm <sup>2</sup>	42 ~ 70kg/cm <sup>2</sup>	42 ~ 70kg/cm <sup>2</sup>	42 ~ 70kg/cm <sup>2</sup>
耐熱衝撃性		良好	良好	良好	良好
比熱 (cgs)		0.28(32~1705°C)		1.075(20~1400°C)	0.2(20~1480°C)
比重		3.3	3.8	5.2	4.6
溶融点		1980°C	1650°C	2480°C	1650°C
硬度		2000(Knoop)	1000(Knoop)	1000(Knoop)	1000(Knoop)
熱膨張率		7.4×10 <sup>-6</sup> /°C(20°C~1480°C)	7.6×10 <sup>-6</sup> /°C(20°C~595°C)	9.5×10 <sup>-6</sup> /°C(20°C~1235°C)	6×10 <sup>-6</sup> /°C(20°C~1100°C)
熱伝導率		2.36Kcal/mhr°C	1.85Kcal/mhr°C	0.99Kcal/mhr°C	2.23Kcal/mhr°C
電 導 性		非電動体	非電動体	室温で非電動体	非電動体
				1200°C以上で急速に増進	
総幅射効率		0.3 ~ 0.4	0.3 ~ 0.4	0.3 ~ 0.4	0.8 ~ 0.9
耐薬品性		極めて高い	極めて良好	極めて良好	不活性

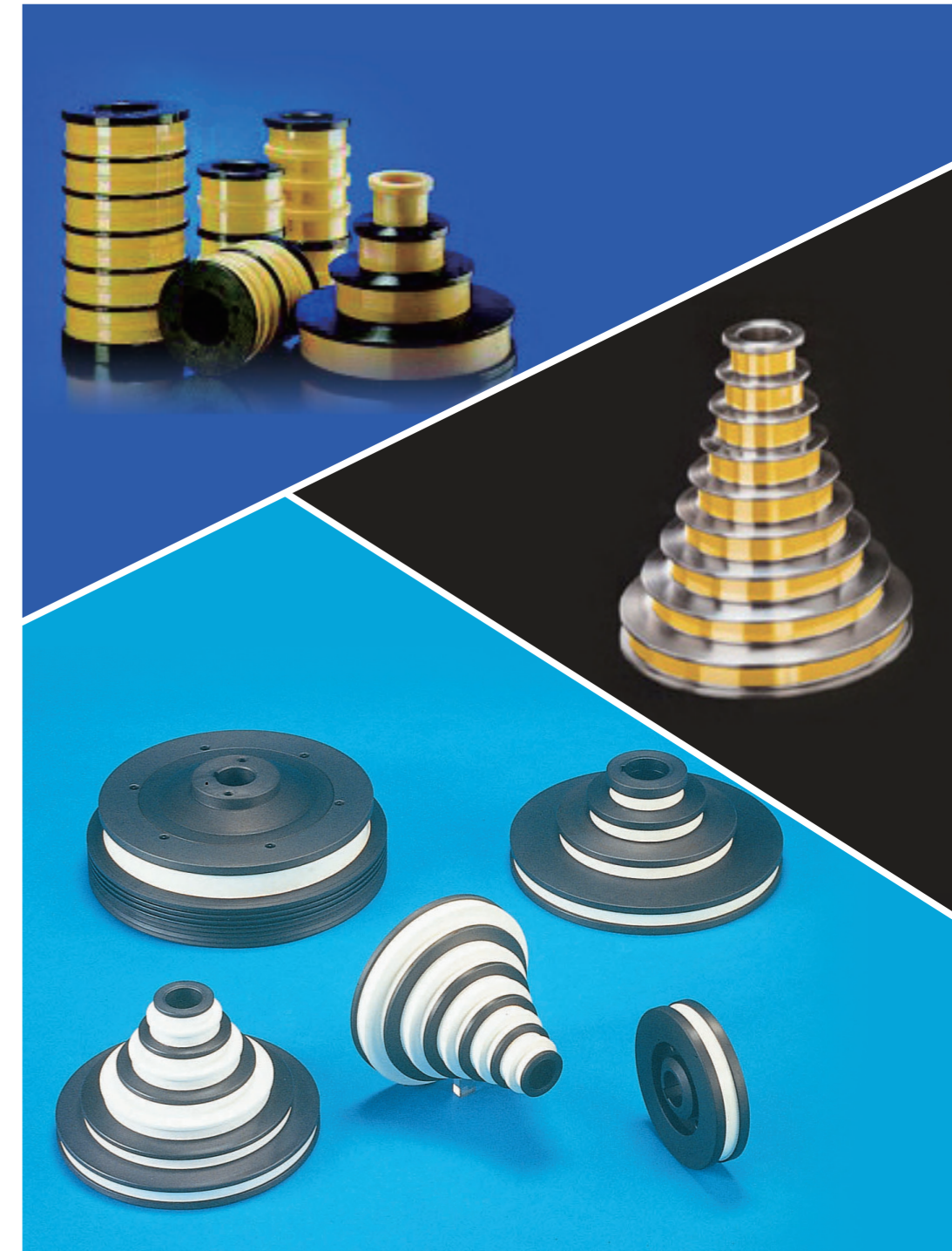
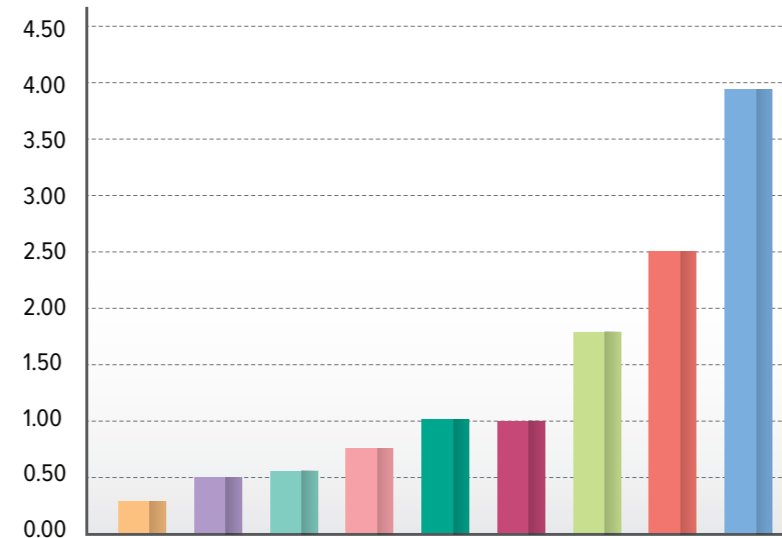
セラミック・自溶性合金磨耗試験データ

大越式による100%すべり摩耗試験

- 条件
  - すべり距離 : Lo=200m
  - すべり速度 : V=0.94m/s
  - 最終荷重 : Po=8.50kg
- 試料
  - セラミック
  - 自溶性合金
  - 硬質クロムメッキ
- 相手材 : SKD11 (HRc 60)

試料	磨耗量(mg/cm <sup>2</sup> )
R-A(ロ-カイト <sup>®</sup> /ホワイトアルミナ)	0.36
R-C(ロ-カイト <sup>®</sup> /酸化クロム)	0.57
R-ZS(ロ-カイト <sup>®</sup> /ジルコニア)	0.64
酸化クロム(ブラス <sup>®</sup> マ)	0.82
ｽﾏｯ34F	1.08
ホワイトアルミナ(ブラス <sup>®</sup> マ)	1.10
アルミナ・チタニア(60:40)ブラス <sup>®</sup> マ	1.90
硬質クロムメッキ	2.58
ｽﾏｯ16C	4.03

- R-A(ロ-カイト<sup>®</sup> /ホワイトアルミナ)
- R-C(ロ-カイト<sup>®</sup> /酸化クロム)
- R-ZS(ロ-カイト<sup>®</sup> /ジルコニア)
- 酸化クロム(ブラス<sup>®</sup>マ)
- ｽﾏｯ34F
- ホワイトアルミナ(ブラス<sup>®</sup>マ)
- アルミナ・チタニア(60:40)ブラス<sup>®</sup>マ
- 硬質クロムメッキ
- ｽﾏｯ16C





# NCT

## 営業本部

〒452-0008 愛知県清須市西枇杷島町地領1丁目11番3

TEL : 052-506-9088 FAX : 052-308-8066

E-mail : sales@nippon-ceratech.co.jp

## 本社経理部

〒451-0064 名古屋市西区名西2丁目35-3-305

TEL : 052-523-5112 FAX : 052-523-5109

仕様は製品改良のため、予告なく変更することがあります。