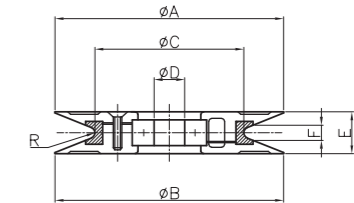


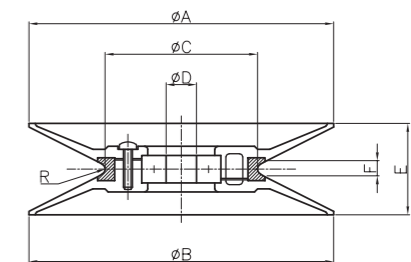
COVER	AL
MATERIAL	Al ₂ O ₃ 96%

MODEL NO	A	B	C	BEARING	D	E	R
OS-80	100	80	55	OPTION	16	5	0.5, 2.0
OS-100	120	100	79		16	5	0.5, 2.0
OS-120	140	120	90		16	5	0.5, 2.0
OS-140	160	140	109		16	5	2.0
OS-160	185	160	124		20	5	2.0
OS-180	205	180	142		20	5	2.0
OS-200	225	200	160		20	5	2.0
OS-220	245	220	170		20	5	2.0

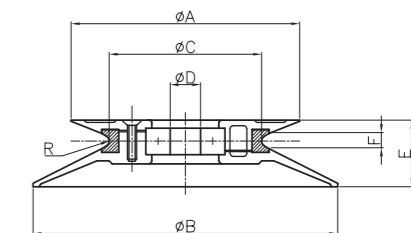
※ DIAMOND POLISHING FINISHED



MODEL NO	A	B	C	D	E	F	R	WEIGHT
152020	20	20	15	Ø3	5	2	1	2.2g
203030	30	30	20	Ø4	8	2.5	1	6.4g
304545	45	45	30	Ø4, Ø5, Ø6, Ø8	10	4	0.3, 1.5, SA 3	23.7g
406060	60	60	40	Ø6, Ø7, Ø8	11	4	0.3, 1.5, 3.25	37.5g
507070	70	70	50	Ø10	8	3.5	0.5	32.0g
508080	80	80	50	Ø10, Ø12	15	7	1.5, 2.5, 10	97.9g

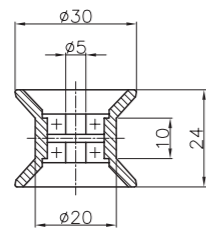


MODEL NO	A	B	C	D	E	F	R	WEIGHT
153030	30	30	15	Ø3	10	2	1	4.8g
204040	40	40	20	Ø4	15	2.5	1	10.9g
306060	60	60	30	Ø4, Ø5, Ø6, Ø8	20	4	0.3, 1.5, SA 3	31.1g
408080	80	80	40	Ø6, Ø7, Ø8	24	4	0.3, 1.5, 3.25	51.4g
501001	100	100	50	Ø10, Ø12	30	7	1.5, 2.5, 10	126.8g

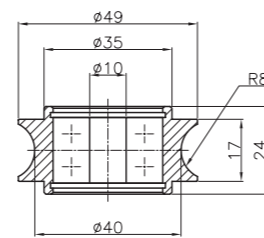
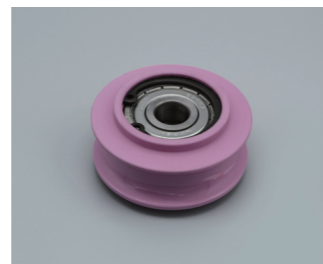


MODEL NO	A	B	C	D	E	F	R	WEIGHT
152030	20	30	15	Ø3	7.5	2	1	3.5g
203040	30	40	20	Ø4	11	2.5	1	8.6g
304560	45	60	30	Ø4, Ø5, Ø6, Ø8	15	4	0.3, 1.5, SA 3	27.4g
406080	60	80	40	Ø6, Ø7, Ø8	17	4	0.3, 1.5, 3.25	41.7g
508010	80	100	50	Ø10, Ø12	23	7	1.5, 2.5, 10	112.4g

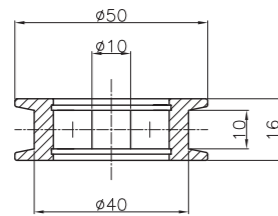
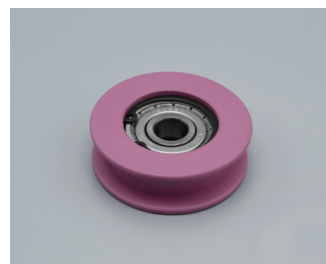
※ DIAMOND POLISHING FINISHED



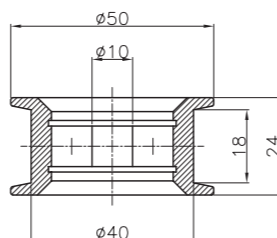
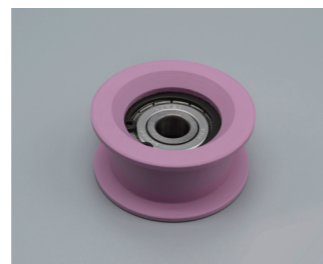
NAME	Ceramic Bearing Roller
NO	302420
MAT'L	Al ₂ O ₃ 92%
WEIGHT	23.7g



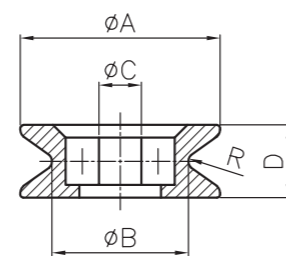
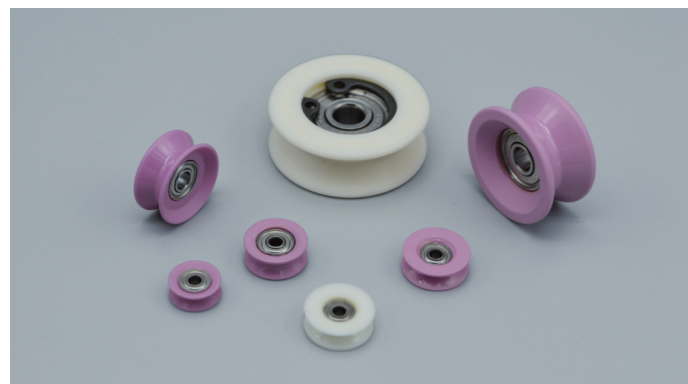
NAME	Ceramic Bearing Roller
NO	492440
MAT'L	Al ₂ O ₃ 96%
WEIGHT	119.4g



NAME	Ceramic Bearing Roller
NO	501640
MAT'L	Al ₂ O ₃ 96%
WEIGHT	82.7g

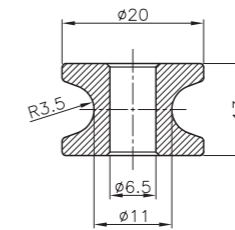


NAME	Ceramic Bearing Roller
NO	502440
MAT'L	Al ₂ O ₃ 96%
WEIGHT	88.7g

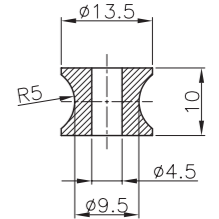


MODEL NO	A	B	C	D	R	MAT'L	WEIGHT
S60830	8	6	2	3	0.5	Al ₂ O ₃ 96%	0.4g
S71035	10.5	7	2	3.5	0.5	Al ₂ O ₃ 96%/ 99%	0.8g
801010	10	8	2	4	0.5	Al ₂ O ₃ 96%	0.8g
R137040	12.5	9.5	4	4	1.5	Al ₂ O ₃ 96%	1.1g
101414	14	10	3	6	0.5	Al ₂ O ₃ 96%	1.7g
142010	20	14	4	10	1	Al ₂ O ₃ 96%	6.6g
R271020	27	20	5	10	0.5	Al ₂ O ₃ 99%	15.1g

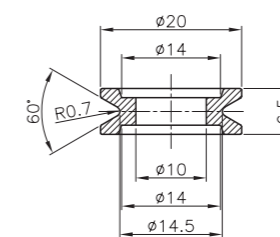
※ DIAMOND POLISHING FINISHED



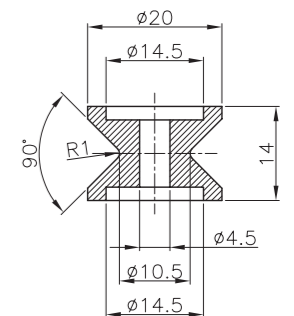
NAME	Roller Guide
NO	Ø6.5 U
MAT'L	Al ₂ O ₃ 99%
WEIGHT	8.8g



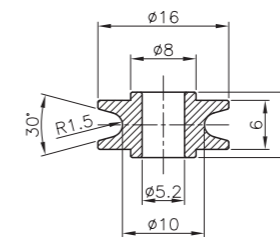
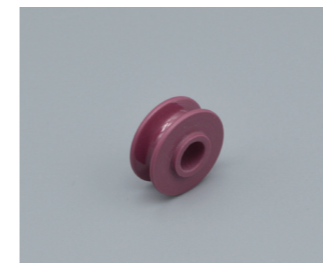
NAME	Roller Guide
NO	149943
MAT'L	Al ₂ O ₃ 99%
WEIGHT	3.2g



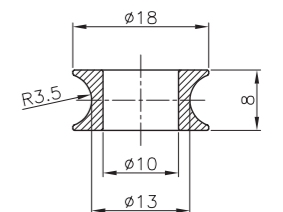
NAME	Roller Guide
NO	201465
MAT'L	Al ₂ O ₃ 99%
WEIGHT	3.5g



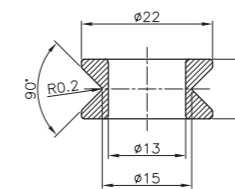
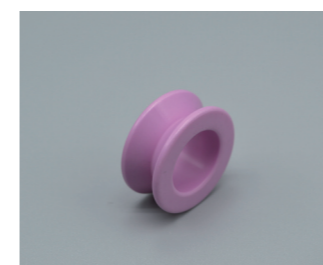
NAME	Roller Guide
NO	191414
MAT'L	Al ₂ O ₃ 99%
WEIGHT	8.5g



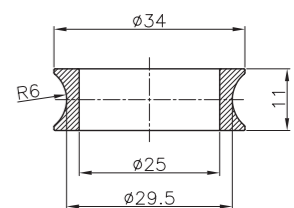
NAME	Roller Guide
NO	R168052
MAT'L	Al ₂ O ₃ 92%
WEIGHT	2.7g



NAME	Roller Guide
NO	R188010
MAT'L	Al ₂ O ₃ 96%
WEIGHT	2.8g



NAME	Roller Guide
NO	R221013
MAT'L	Al ₂ O ₃ 96%
WEIGHT	6.0g



NAME	Roller Guide
NO	R341125
MAT'L	Al ₂ O ₃ 96%
WEIGHT	11.6g