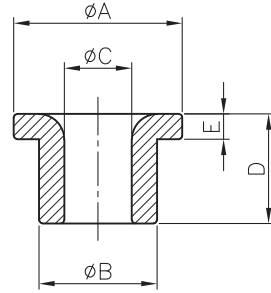
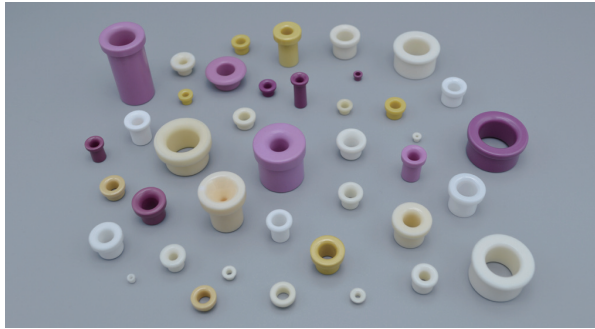


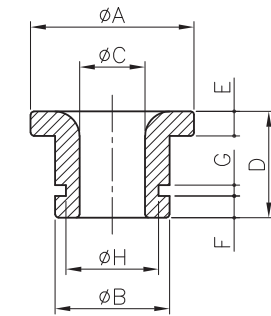
EYELET GUIDE



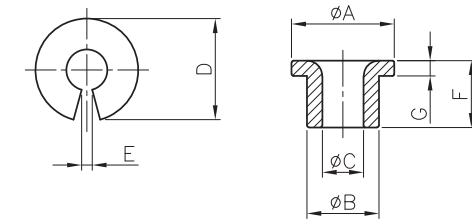
MODEL NO	A	B	C	D	E	MAT'L	WEIGHT	MODEL NO	A	B	C	D	E	MAT'L	WEIGHT
K241230	2.9	2.4	1.2	3.0	1.0	Al ₂ O ₃ 99%	0.04g	E117090	15.3	11.9	7.0	9.0	2.5	Al ₂ O ₃ 99%	3.00g
K271133	4.0	2.7	1.1	3.3	1.3	Al ₂ O ₃ 99%	0.10g	E117086	15.4	11.9	7.0	8.6	1.9	Al ₂ O ₃ 96%	2.50g
E292314	3.5	2.9	2.3	1.4	0.5	Al ₂ O ₃ 92%	0.01g	E126318	16.0	12.5	6.3	18.6	3.6	Al ₂ O ₃ 96%	7.12g
K352535	4.5	3.5	2.5	3.5	1.0	Al ₂ O ₃ 92%	0.10g	E126214	15.9	12.5	6.2	14.9	3.2	Al ₂ O ₃ 96%	5.72g
K382135	5.3	3.8	2.1	3.5	1.0	Al ₂ O ₃ 99%	0.15g	E126515	19.2	12.8	6.5	15.5	4.7	Al ₂ O ₃ 96%	7.71g
E413011	4.9	4.1	3.0	1.1	0.7	Al ₂ O ₃ 92%	0.04g	E161016	20.9	16.1	10.9	16.0	3.1	Al ₂ O ₃ 96%	7.32g
E461996	5.8	4.6	1.9	9.6	1.5	Al ₂ O ₃ 96%	0.52g	T181314	24.0	18.7	13.4	14.5	4.8	Al ₂ O ₃ 99%	10.37g
K473040	6.6	4.7	3.0	4.0	1.0	Al ₂ O ₃ 92%	0.22g	T191515	25.0	19.5	15.0	15.0	5.0	Al ₂ O ₃ 99%	10.62g
K483025	6.5	4.8	3.0	2.5	1.0	Al ₂ O ₃ 92%	0.15g	T221513	25.0	22.5	15.0	13.0	3.0	Al ₂ O ₃ 92%	10.90g
K483630	6.6	4.8	3.6	3.0	1.5	Al ₂ O ₃ 92%	0.12g	E103611	12.1	10.0	3.6	11.0	6.5	Al ₂ O ₃ 99%	3.60g
E563538	8.1	5.6	3.5	3.8	1.5	Al ₂ O ₃ 92%	0.32g	E105219	12.2	10.0	5.2	19.1	2.0	Al ₂ O ₃ 96%	4.17g
K573597	7.2	5.7	3.5	9.7	1.9	Al ₂ O ₃ 99%	0.70g	T106510	13.5	10.0	6.5	10.1	3.0	Al ₂ O ₃ 92%	2.22g
K583060	8.0	5.8	3.0	6.0	2.0	Al ₂ O ₃ 92%	0.50g	E126112	15.1	12.0	6.1	12.0	3.0	Al ₂ O ₃ 99%	4.50g
E592451	7.0	5.9	2.4	5.1	1.9	Al ₂ O ₃ 92%	0.47g	T127510	15.0	12.0	7.5	10.0	2.5	Al ₂ O ₃ 92%/99%	3.13g
E593359	10.3	5.9	3.3	5.9	2.7	Al ₂ O ₃ 96%	0.92g	T128012	15.0	12.0	8.0	12.0	3.0	Al ₂ O ₃ 99%	3.30g
K593456	8.5	5.9	3.4	5.6	1.8	Al ₂ O ₃ 92%	0.48g	T138590	20.0	13.0	8.5	9.0	3.0	Al ₂ O ₃ 96%/99%	4.47g
E612685	8.2	6.1	2.6	8.5	1.8	Al ₂ O ₃ 92%	0.82g	E159412	19.9	15.9	9.4	12.8	3.0	Al ₂ O ₃ 96%	6.15g
K633910	8.0	6.3	3.9	10.0	2.0	Al ₂ O ₃ 92%	0.80g	E181417	20.2	18.0	14.0	17.2	2.0	Al ₂ O ₃ 96%	6.15g
K663377	9.3	6.6	3.3	7.7	1.9	Al ₂ O ₃ 99%	0.94g	E187121	21.1	18.9	7.1	21.2	5.7	Al ₂ O ₃ 96%	19.40g
K674077	9.6	6.7	4.0	7.7	2.0	Al ₂ O ₃ 99%	0.91g	E201212	22.1	20.2	12.1	12.7	2.0	Al ₂ O ₃ 99%	10.37g
E693583	11.3	6.9	3.5	8.3	2.2	Al ₂ O ₃ 99%	1.16g	E261919	36.2	26.3	19.2	19.4	5.0	Al ₂ O ₃ 96%	24.50g
E693560	12.1	6.9	3.5	6.0	2.3	Al ₂ O ₃ 99%	1.08g	E262030	32.1	26.6	20.0	3.0	2.4	Al ₂ O ₃ 96%	4.57g
E693647	12.3	6.9	3.6	4.7	2.3	Al ₂ O ₃ 99%	0.96g	K361830	5.7	3.6	1.8	3.0	1.0	Al ₂ O ₃ 99%	0.14g
K714280	10.0	7.1	4.5	8.0	2.0	Al ₂ O ₃ 99%	0.93g	E382826	4.7	3.8	2.8	2.6	0.8	Al ₂ O ₃ 92%	0.07g
K723580	10.0	7.2	3.5	8.0	2.0	Al ₂ O ₃ 92%	1.12g	K392545	6.0	3.9	2.5	4.5	1.5	Al ₂ O ₃ 92%/99%	0.20g
K744754	9.0	7.4	4.7	5.4	1.2	Al ₂ O ₃ 99%	0.57g	K400345	6.0	4.0	0.3	4.5	1.5	Al ₂ O ₃ 99%	0.18g
K745050	10.0	7.4	5.0	5.0	2.0	Al ₂ O ₃ 92%	0.62g	K400545	6.0	4.0	0.5	4.5	1.5	Al ₂ O ₃ 99%	0.26g
K774653	10.2	7.7	4.6	6.0	1.9	Al ₂ O ₃ 99%	1.00g	K400745	6.0	4.0	0.7	4.5	1.5	Al ₂ O ₃ 99%	0.26g
E784213	9.7	7.8	4.2	13.3	2.9	Al ₂ O ₃ 96%	1.80g	K401145	6.0	4.0	1.1	4.5	1.5	Al ₂ O ₃ 99%	0.27g
K794774	10.0	7.9	4.7	7.4	2.0	Al ₂ O ₃ 92%	0.96g	K402530	6.0	4.0	2.5	3.0	1.0	Al ₂ O ₃ 92%/96%	0.12g
K845055	11.0	8.4	5.0	5.5	2.0	Al ₂ O ₃ 96%	0.84g	K402232	6.0	4.0	2.2	3.2	1.0	Al ₂ O ₃ 92%	0.13g
K845073	11.0	8.4	5.0	7.3	2.3	Al ₂ O ₃ 92%/96%	1.05g	K483147	7.8	4.8	3.1	4.7	1.0	Al ₂ O ₃ 92%/96%	0.24g
E845087	12.0	8.4	5.0	8.7	2.3	Al ₂ O ₃ 99%	1.65g	K503147	7.2	5.0	3.1	4.7	1.5	Al ₂ O ₃ 99%	0.34g
E883511	11.9	8.8	3.5	11.0	6.0	Al ₂ O ₃ 99%	3.14g	K542955	7.5	5.4	2.9	5.5	1.9	Al ₂ O ₃ 96%	0.40g
E895090	11.1	8.9	5.0	9.0	2.0	Al ₂ O ₃ 99%	1.57g	K553044	8.5	5.5	3.0	4.4	1.5	Al ₂ O ₃ 92%	0.34g
E895012	11.4	8.9	5.0	12.5	2.0	Al ₂ O ₃ 96%	2.03g	K553836	7.5	5.5	3.8	3.6	1.0	Al ₂ O ₃ 92%	0.21g
E926192	12.8	9.2	6.1	9.2	3.1	Al ₂ O ₃ 99%	1.86g	K563479	8.0	5.6	3.4	7.9	1.4	Al ₂ O ₃ 96%	0.48g
K936570	11.3	9.3	6.5	7.0	2.0	Al ₂ O ₃ 92%	0.98g	K603070	8.0	6.0	3.0	7.0	2.0	Al ₂ O ₃ 99%	0.70g
K956210	12.8	9.5	6.2	10.0	3.0	Al ₂ O ₃ 99%	2.14g	K613316	8.0	6.1	3.3	16.6	1.5	Al ₂ O ₃ 92%	1.30g
K975498	11.3	9.7	5.4	9.8	3.0	Al ₂ O ₃ 96%	1.95g	K633273	8.5	6.3	3.2	7.3	2.0	Al ₂ O ₃ 99%	0.80g
E977145	12.3	9.7	7.1	4.5	2.2	Al ₂ O ₃ 99%	0.87g	K674647	9.2	6.7	4.6	4.7	1.9	Al ₂ O ₃ 99%	0.61g
E995119	14.1	9.9	5.1	19.3	4.0	Al ₂ O ₃ 96%	4.66g	K703778	12.0	7.0	3.7	7.8	2.5	Al ₂ O ₃ 99%	1.48g
E995212	13.8	9.9	5.2	12.7	7.8	Al ₂ O ₃ 99%	4.64g	E793910	10.1	7.9	3.9	10.0	5.1	Al ₂ O ₃ 99%	1.80g
K995589	14.0	9.9	5.5	8.9	3.0	Al ₂ O ₃ 92%	2.15g	K804080	9.5	8.0	4.0	8.0	2.0	Al ₂ O ₃ 99%	1.25g
E106412	14.0	10.7	6.4	12.9	2.6	Al ₂ O ₃ 96%	3.15g	E904879	12.5	9.0	4.8	7.9	2.0	Al ₂ O ₃ 96%	1.60g
E117048	13.9	11.5	7.0	4.8	1.7	Al ₂ O ₃ 99%	1.25g	E976012	11.9	9.7	6.0	12.1	5.1	Al ₂ O ₃ 99%	2.61g

※ 上記のアルミナセラミックス製規格商品以外にも、ジルコニアセラミックス製アイレットガイドの製作も致しております。

EYELET GUIDE



GROOVED EYELET GUIDE										
MODEL NO	A	B	C	D	E	F	G	H	MAT'L	WEIGHT
GE794092	10	7.9	4	9.2	2	1.5	2	6.3	Al ₂ O ₃ 96%	1.2g
804080	10	7.9	4	8	2	1.5	1	7	Al ₂ O ₃ 99%	1.2g
GE995010	13	9.9	5	10	2.3	2.7	2	8	Al ₂ O ₃ 96%	2.0g
24-507001D	16	11.5	5.5	10.5	3	1.5	1	10.9	Al ₂ O ₃ 99%	3.5g
GE127010	16	12.2	7	10	2.3	2.7	1.8	10.2	Al ₂ O ₃ 96%	2.9g
GE138590	20	13	8.5	9	3	1.8	2	11	Al ₂ O ₃ 96%	3.9g
GE138570	17	13	8.5	7	2.3	1	1.5	12	Al ₂ O ₃ 96%	2.5g
GE181216	22	18.3	12	16.5	3.6	2	1.5	16.4	Al ₂ O ₃ 99%	10.6g
GE191415	25	19.2	14	15	5	1.5	1.5	17.6	Al ₂ O ₃ 92%	10.2g



SPLIT EYELET GUIDE										
MODEL NO	A	B	C	D	E	F	G	MAT'L	WEIGHT	
SE391362	6.4	3.9	1.3	6.2	0.7	3.5	1.4	Al ₂ O ₃ 99%	0.2g	
SE351447	5.2	3.5	1.4	4.7	0.9	4	1	Al ₂ O ₃ 99%	0.1g	
SE351972	7.4	3.5	1.9	7.2	0.9	3.9	1.5	Al ₂ O ₃ 99%	0.2g	
R653507	6.5	3.6	2	6.4	0.8	3	1.3	Al ₂ O ₃ 99%	0.2g	
SE402257	6	4	2.2	5.7	1.3	3.9	1.3	Al ₂ O ₃ 99%	0.1g	
SE462295	10	4.6	2.2	9.5	1.2	6.5	3	Al ₂ O ₃ 92%	0.8g	
723177	10	7.1	3.1	9.4	1.4	7.7	2.3	Al ₂ O ₃ 99%	1.0g	
R773756	10	7.6	3.6	9.6	3.3	5.6	2	Al ₂ O ₃ 96%	0.7g	
SE134015	15	13	4	15	1.2	7.3	2	Al ₂ O ₃ 96%	3.4g	
SE804578	10	8	4.5	7.8	3.6	6.2	2	Al ₂ O ₃ 99%	0.7g	
SE834810	10.5	8.3	4.8	10.2	0.9	4	1.5	Al ₂ O ₃ 96%	0.7g	
SE105712	12.5	10.5	5.7	12	4.5	8	3	Al ₂ O ₃ 99%	18.0g	
SE156219	21	15	6.2	19.8	2.5	36	5	Al ₂ O ₃ 96%	18.7g	
PI26573	15	12	6.5	14.8	2.6	7.2	3.5	Al ₂ O ₃ 99%	2.6g	
SE136517	19	13	6.5	17	6	19.5	5	Al ₂ O ₃ 96%	6.8g	